

# *Village Voice*

DENHAM, HOXNE, SYLEHAM &  
WINGFIELD  
JUNE — JULY 2025



Supported by community donation and advertising revenue

## PARISH COUNCILS

### DENHAM

Web: [www.denham.onesuffolk.net](http://www.denham.onesuffolk.net)  
Wendy Alcock (Clerk) 07726 924786  
Email: [denhamparishclerk@gmail.com](mailto:denhamparishclerk@gmail.com)  
Kerina Jane (VC)  
Duncan McGregor (C)  
Maria Ford  
Nancy Ford

### HOXNE

Web: [www.hoxne.onesuffolk.net](http://www.hoxne.onesuffolk.net)  
Sarah Foote (Clerk) 07554 733621  
Email: [pc@hoxne.suffolk.gov.uk](mailto:pc@hoxne.suffolk.gov.uk)  
Caroline Abbott  
Paul Ellis (VC)  
Angus Herron  
Richard Kruszewski  
Marie Lagerberg  
Bryn Lerwill  
Jason Middleton  
Chris Parkin (C)  
Margaret Sillis  
Pasco Warner

### SYLEHAM

Web: [www.syleham-pc.org.uk](http://www.syleham-pc.org.uk)  
Lesley Hastie (Clerk)  
Email: [lesleysylehampc@gmail.com](mailto:lesleysylehampc@gmail.com)  
Gloria Elsdon (VC) 01379 668409  
Malcolm Flounders (C) 01379 668413  
David Goodwin  
Layla Pettit 07715 609762  
Steve Phillips 01379 668686  
Robert Pilch 01379 668038  
Steven Scott 07780 977518

### WINGFIELD

Web: [www.wingfield-pc.org.uk](http://www.wingfield-pc.org.uk)  
Lesley Hastie (Clerk)  
Charlotte Claxton  
Robin Feavearyear 01379 586757  
Tony Jolly (VC) 01379 384024  
Guy Mathias 01379 388391  
Dennis Murray 01379 384503  
Lee Smith (C) 01379 384531

## CHURCH COUNCILS

### DENHAM

Helen Joslin (Sec.)  
Barbara Irwin (Treas.) 01379 669077  
Paul Chenery

### HOXNE

Deborah Harding (Sec.) 01379 668190  
Guy McGregor (CW) 01379 668434  
Wilf White (CW) 07932 768900  
Caroline Abbott  
Andrew Castleden  
Richard Giffin  
David Hyde

### SYLEHAM

Sarah Pilch (Sec.) 01379 668038  
Julian Thompson (Treas.) 07770 582486  
Sarah Buckley (CW) 01379 668480  
Mary Lewis (CW) 01379 669258  
Jackie Campbell 01379 668306  
Lorraine Doll 01379 668637  
Thelma Soanes  
Jim Woodger

### WINGFIELD

Patricia Grant (Treas.) 01379 384985  
Jacky Taylor 01379 388355  
Robert Elliott  
Sarah Berry  
Neil Mathias

The Revd Canon Eleanor Goodison and  
Revd John McCracken are ex-officio  
members of each Parochial Church  
Council.

C Chair  
VC Vice Chair  
CW Church Warden

## Contents

- 7 Auditions for Terry Pratchett's *Carpe Jugulum*
- 17 Bats with Cheese & Wine
- 45 Borderhoppa
- 42 The Cedar of Lebanon
- 14 Church News & Services
- 26 Citizens' Advice
- 20 Community Day, Hoxne
- 46 Crossword
- 31 Flash Fiction
- 23 Flower, Craft & Produce Show
- 34 Fressingfield Medical Centre
- 39 Harleston Choral Society
- 9 Hoxne Film Nights
- 22 Hoxne Garden & Social Club
- 33 Hoxne Heritage Group
- 8 Hoxne Village Hall
- 29 Hoxne's Lost Palace
- 45 Library, mobile service
- 19 Little Lambs
- 19 Maynard Trust
- 19 Mothers' Union
- 43 New Reeding Woods
- 13 OpenMic Night, Syleham
- 44 Parish Council Report
- 35 Phoenix Group
- 31 St Edmund's Primary School
- 40 Scouts
- 19 Stride & Ride
- 17 Summer Event, Hoxne
- 10 Syleham & Wingfield Village Hall
- 39 University of the 3rd Age, Diss
- 10 Village Voices Choir
- 39 Waveney Heritage Centre
- 37 Wingfield & District Garden Club
- 6 Wingfield Barns
- 20 Wingfield Open Gardens



## Letter to the Editor

### A Big Thank You!

Wingfield Barns wish to express their gratitude to Judy and Eammon Andrews for their support in hosting and feeding concert musicians during the course of the year.

We also wish to thank our small cadre of volunteers, without whom it would be impossible to run the events and maintain many aspects of the Barns and the Community Shop. They have been magnificent! Special thanks also to Melanie and Dennis Murray, Ian Castleton and Sally Heydon.

And a request to those in the Wingfield and surrounding villages/towns area - we are always seeking others to join our volunteer helping team, so please let us know if you are interested and wish to help and maintain this fantastic local community asset. Please contact me if you are willing to help in any capacity.

**Erica Summers**  
POperations Manager

## Diary Dates

### Sun 1 June

Wingfield Barns Open Gardens p15

### Tue 3 June

Coffee & Cake SWH p10

### Thu 5 June

U3A Diss talk, *The Norfolk Landscape in Ten Maps* p39

### Fri 6 June

Open Mic SWH p10

### Sat 7 June

Strawberry Cream Tea SWH p11  
Summer Quiz WB p6  
Summer Event, Hoxne church p17

### Mon 9 June

Auditions for Terry Pratchett's *Carpe Jugulum*, Jay's Green Community Hall, Harleston p7

### Tue 10 June

Phoenix Group talk, *Call the Midwife* HVH p35



### Thu 12 June

Auditions for Terry Pratchett's *Carpe Jugulum*, Jay's Green Community Hall, Harleston p7

### Fri 13 June

Lucky Purplestar Karaoke SWH p10  
Hoxne Film, *A Complete Unknown*, HVH p9

### Sat 14 June

Singer, Anna Pancaldi WB p6  
Waveney Heritage's garage sale, Brockdish p39

### Tue 17 June

Rural Coffee Caravan WB p15  
Hoxne Heritage Group Mtg, The Swan, Hoxne p33

### Thu 19 June

J's Meadow group SWH p10  
Hoxne Garden Club talk, *Orchids* HVH p22

### Fri 20 June

Quiz SWH p10

### Sat 21 June

Coffee Morning, Hoxne Church p17

### Wed 25 June

Mothers' Union service, Fressingfield Church p17  
Waveney Heritage's tour of 'wartime' Harleston, Swan Hotel, Harleston p39

### Thu 26 June

Coffee, Craft, Chat SWH p10

### Fri 27 June

Bingo SWH p10

### Sat 28 June

Harleston Choral Society sing Carl Orff's *Carmina Burana*, Harleston Sancroft Academy p39

### Tue 1 July

Coffee & Cake SWH p10

### Thu 3 July

U3A Diss talk, *The Food Museum at Stowmarket* p39

### Fri 4 July

Bats with Wine & Cheese, Hoxne Church p5  
OpenMic Night for young singers & musicians SWH p13  
St Edmund's Primary School Sports Day HPP p31

### Sat 5 July

Annual family BBQ SWH p10  
Village Voices sing for Water Aid WB p6

### Tue 8 July

Phoenix Group talk, *Beekeeping* HVH p35

### Fri 11 July

Purplestar Karaoke SWH p10  
Hoxne Film, *Bridget Jones: Mad About the Boy* HVH p9

### Sat 12 July

Play, *Romeo & Juliet* WB p7  
Mothers' Union 'Tea by the Sea Shop' URC Church Hall, Southwold p17

### Tue 15 July

Rural Coffee Caravan WB p15  
Hoxne Heritage Group talk, *Tithe Wars in the 1930s* HVH p33

### Thu 17 July

J's Meadow group SWH p10

### Fri 18 July

Fressingfield Scouts' Open Evening, Priory Road, Fressingfield IP21 5PH p41

### Sat 19 July

Coffee Morning, Hoxne Church p17

### Fri 25 July

Bingo SWH p10

### Thu 31 July

Coffee, Craft, Chat SWH p10

Future Diary Dates:

### Sat 6 Sept

Hoxne Garden Club's Flower, Craft & Produce Show HVH p23

### Sat 13 Sept

Event, *Stride & Ride*, Hoxne Church p19



All Church Service dates p14

Mobile Library dates p45

Borderhoppa dates p45

<b>HPP</b>	Hoxne Playing Field & Pavilion
<b>HVH</b>	Hoxne Village Hall
<b>SWH</b>	Syleham & Wingfield Village Hall
<b>WB</b>	Wingfield Barns





## What's On

### SUMMER QUIZ

Saturday 7<sup>th</sup> June

DOORS OPEN 7pm for 7.30pm START

*Grab a team for a fun night  
here at Wingfield Barns.  
£5 per person  
including a selection of nibbles.*

**LICENSED BAR**

*To book a table of 4 or 6,  
please email:*

[office.manager@wingfieldbarns.co.uk](mailto:office.manager@wingfieldbarns.co.uk)

*or call: 01379 384505*

Wingfield Barns IP21 5RA

### ANNA PANCALDI

Saturday 14<sup>th</sup> June, 7.30pm



Anna Pancaldi, an enchanting and noteworthy singer-songwriter, comes to Wingfield Barns. Anna is influenced by the likes of Carole King and Joni Mitchell, a rare talent with wondrous vocals and thought-provoking songs. Not to be missed!

Book online:

[wegottickets.com/events/65521](http://wegottickets.com/events/65521)

or email:

[office.manager@wingfieldbarns.com](mailto:office.manager@wingfieldbarns.com)

Tickets: £12.50

### VILLAGE VOICES CHOIR

*sing for*



Saturday 5<sup>th</sup> July, 7.30pm

Tickets: £10 (plus £1 booking fee)

In 2018, Village Voices participated in *Sing for Water*, an event that unites choirs from across the country to raise funds for WaterAid. To date, they have raised over £1.3 million, helping to change and save lives worldwide. Join us for an evening of songs—both old and new—centred around a watery theme, as we come together to support this vital charity.

Book online: [wegottickets.com/event/655879](http://wegottickets.com/event/655879)

or email: [office.manager@wingfieldbarns.co.uk](mailto:office.manager@wingfieldbarns.co.uk)

Wingfield Barns IP21 5RA

## RoughCast Theatre's 25<sup>th</sup> Anniversary Tour

### ROMEO & JULIET

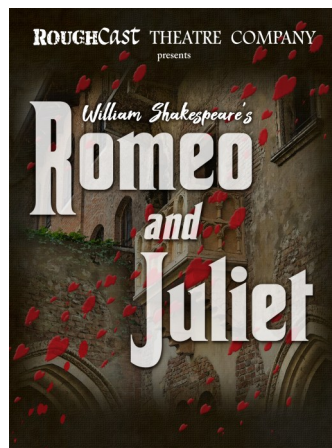
Saturday 12<sup>th</sup> July, 2.30 and 7.30pm

Grab your picnic, blanket and chairs and come and enjoy classic theatre in the beautiful outdoor setting of Wingfield Barns.

RoughCast's popular summer Shakespeare tour is back. Rollo Bacon (*Journey's End*) and Scarlett Fisher (Eliza in last year's *Pygmalion*) play Shakespeare's "star-crossed lovers" in RoughCast's first-ever production of *Romeo and Juliet*. Directed by Mark Burridge (*Journey's End*, *The Tempest*, *A Midsummer Night's Dream*, *Top Girls*) and featuring original music by William Drew-Batty, RoughCast's fast-moving and dramatic production captures the romance and drama, as well as the humour, of one of Shakespeare's best-loved plays.

Doors open 1 hour before each performance to allow you to set up your picnic. Licensed bar.

For matinee tickets go to: [wegottickets.com/events/655858](http://wegottickets.com/events/655858). For evening tickets go to: [wegottickets.com/events/65505](http://wegottickets.com/events/65505)



For more information, please contact Wingfield Barns IP21 5RA  
Tel: 01379 384505 Email: [office.manager@wingfieldbarns.co.uk](mailto:office.manager@wingfieldbarns.co.uk)  
[www.wingfieldbarns.com](http://www.wingfieldbarns.com)

### Harleston Players' *Carpe Jugulum*

by Terry Pratchett, adapted for the stage by Stephen Briggs

### AUDITIONS

Monday 9<sup>th</sup> June, 7.30pm  
Thursday 12<sup>th</sup> June, 7.30pm

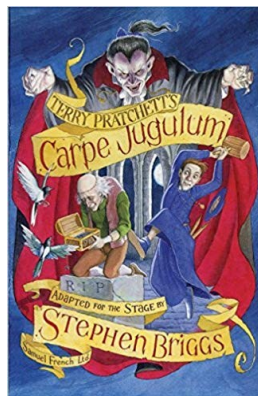
at Jay's Green Community Hall, Harleston

The de Magpyrs are the sort of vampires that would have Count Dracula spinning in his grave: modern, forward-looking and no long afraid of holy water, garlic, religious symbols or, indeed, of anything else. This makes them very, very dangerous.

Luckily for the Discworld, the three Lancre witches are on hand - and the battle is on!

This is a very funny play which will require a large cast - at least 9 women and 7 men. So if playing witches, vampires, an Igor, a priest, plus various other characters sounds like fun, then we will look forward to seeing you at the auditions.

For more information, contact Dawn Briggs:  
[scorerdawn1821@gmail.com](mailto:scorerdawn1821@gmail.com)





# *St Edmund's Hall, Hoxne*

Website: [hoxnevillagehall.co.uk](http://hoxnevillagehall.co.uk)

The Film Nights' move to the lounge/bar area has proved very popular, with us reaching capacity for the showing of *Conclave*. In June we will be showing *A Complete Unknown*, a film about Bob Dylan - followed in July with *Bridget Jones: Mad About the Boy*.

During the last couple of months we have hosted a wedding, two parties and a fundraiser quiz, plus all of our usual regular activities:

Badminton, Ballroom Dancing, Meditation, Morris Dancing, Pilates,  
Film Nights, Garden Group, Hoxne Historical Group,  
Ladies' Phoenix Group, Village Voices Choir.

If you are interested in joining any of these groups/activities then visit the hall website: [hoxnevillagehall.co.uk](http://hoxnevillagehall.co.uk) or check out the notice boards both outside and inside the hall.

To discuss organising an event at the hall, please email: [hoxnevhbookings@outlook.com](mailto:hoxnevhbookings@outlook.com). We have three different areas that are available to hire individually and collectively, so can suit all needs.

**Bryn Lerwill**

## HOXNE PARISH COUNCIL

### **PARISH CLERK AND RESPONSIBLE FINANCIAL OFFICER**

30 hours per month – salary dependent on qualifications and experience

The Parish Council meets monthly (first Thursday of the month) and is working on a range of projects to enhance village life.

A Clerk is required to manage the council's administration, accounting and statutory responsibilities as well as attending and minuting monthly meetings.

Individuals with strong administrative skills and attention to detail, and a willingness to undertake sector specific training, are invited to apply. The Clerk works from their home and is provided with necessary equipment.

To apply please send further details and your CV to [hoxneparishcouncil@gmail.com](mailto:hoxneparishcouncil@gmail.com). Closing Date: Monday 16 June 2025.

## Hoxne Film Nights



### A Complete Unknown

Friday 13<sup>th</sup> June

Hoxne Village Hall

7:30pm £5.00 a ticket

Tickets on the door

Bar open from 7pm and during interval. Cert 15

In the early 1960s, 19-year-old Bob Dylan arrives in New York with his guitar and revolutionary talent, destined to change the course of American music. Forming his most intimate relationships during his rise to fame, he grows restless with the folk movement, making a controversial choice that reverberates worldwide.



### Bridget Jones: Mad About the Boy

Friday 11<sup>th</sup> July

Hoxne Village Hall

7:30pm £5.00 a ticket

Tickets on the door

Bar open from 7pm and during interval. Cert 15

Bridget is alone once again, widowed four years ago, when Mark was killed on a humanitarian mission in the Sudan. She's now a single mother to 9-year-old Billy and 4-year-old Mabel, and is stuck in a state of emotional limbo, raising her children with help from her loyal friends and even her former lover, Daniel Cleaver (Hugh Grant).

# Syleham & Wingfield Village Hall IP21 4LT

Thank you to everyone who has supported our recent varied events - *Eastern Angles* theatre, Jumble Sale, scrap metal collection .. and many more! Phew! Events like these help to maintain our village hall. Other events we run, like the regular Quiz and Bingo evenings, raise funds for locally-nominated charities and good causes. These have been so well supported, thank you!

## Strawberry Cream Tea

Our delicious Strawberry Cream Tea on **Saturday 7th June**, 2 'til 4pm, will be in aid of East Anglian Air Ambulance. Join us for wonderful refreshments by donation to EAAA - one of our favourite charities.



## Rural Coffee Caravan

The Rural Coffee Caravan will benefit from our Quiz on Friday 20th June, ideally teams of 4, £5 per person, 7.30 for 8pm start, Mars bars are a tradition for lowest scoring team - and are fiercely contested!



## Bingo

Bingo in June, 27th, sees us raise funds for Lighthouse Women's Aid - please also bring a few items of new toiletries to pass on, if you can.

July Bingo, 25th, is for Stradbroke Tennis youth and children's equipment. Be ready to start Bingo just after 8pm, bring your own snacks or buy chocolate or crisps at the bar.

## Family BBQ

Our annual Family BBQ on **5th July** will, if the weather is kind, be on J's Meadow, opposite the village hall, from 5pm. We have live music



from the *Moonlighters*, reasonably priced food and drinks. Come and join us!

**Please note - No Open mic in August or September; no quiz in July or August.**

Karaoke, 2nd Friday and Bingo, last Friday, just go on forever - with the same dreadful calibre of raffle prizes!

## Community Groups

Have you tried any of our community groups? Contact Julie if you would like to come along but need transport.

Continuing as a community event is the monthly **Coffee and Cake** on the first Tuesday of the month, 11 to 11.30am. All very welcome! Free - group will decide where to pass any donations received.

On the last Thursday of the month we hold a **Coffee, Craft and Chat** group, 1.30 to 3pm. All very welcome! Free - see Coffee/Cake entry. Please bring your own craft, or join us for a catch-up and chat.

**J's Meadow get together group have changed to the third Thursday** - we meet on J's Meadow - a piece of community land down the foot path opposite the village hall - to tidy, snip, chat. Bring your own tools and refreshments. J's Meadow is well used by local families and is maintained by volunteers. Simon B is our main volunteer grass cutter, but everything else is down to the Thursday group. If you have time to pop along between 10 and 12 we'd love to see you; or get in contact if you'd like to be involved but these times don't fit in with you. Thank you to Simon, and thanks to all the other volunteers!

**Julie Thompson**  
Text 07929 794636  
[juliethompson435@gmail.com](mailto:juliethompson435@gmail.com)



## *VE Day, 80th Anniversary 1945 - 2025*

On Saturday 10th May (a little late) Syleham and Wingfield marked the 80th anniversary of Victory in Europe day with an Afternoon Tea on the magnificent setting of J's Meadow. Gallons of tea were enjoyed, along with masses of gorgeous cakes and savouries - and one or two jugs of Pimms, too!

The event passed gently under a beautiful late Spring blue sky - until the races started.... Well, let's not dwell on that glorious chaos!

Thank you to all who supported this event - to all the cake bakers, tea makers, white line markers, games inventors, bar servers, grass cutters and to all who bought raffle tickets in aid of, and gave donations to, Diss Royal British Legion for the delicious Afternoon Tea.

Syleham and Wingfield  
Sports and Social Club presents  
**STRAWBERRY CREAM TEAS!**

Saturday, 7th June

2pm until 4pm

Free entry - donations to  
East Anglian Air Ambulance

Syleham & Wingfield Village Hall  
IP21 4LT

ALL VERY WELCOME



*VE Day 80th Anniversary - Afternoon Tea on J's Meadow*

GRAHAM BORRILL

★

**THATCHER**

COSY COT HECKFIELD GREEN  
HOXNE EYE SUFFOLK IP21 5AB

TEL : 01379 668 777 MOBILE : 07960 254 537

Email : [grahamborrill@yahoo.co.uk](mailto:grahamborrill@yahoo.co.uk)

 **Hawthorn**  
Hard Landscape

Design - Installation - Maintenance - Repair  
Fencing Driveways Patios Paving Turfing

For a free quote call Stuart on  
**Mob: 07908 262114**  
Or Visit  
[www.hawthornhardlandscape.co.uk](http://www.hawthornhardlandscape.co.uk)

0286538

**QUOVE** ACCOUNTING

Creative **Accounting.**  
Dynamic **Accounting.**  
Efficient **Accounting.**  
Innovative **Accounting.**  
Positive **Accounting.**

**Contact us**


[hello@quove.co.uk](mailto:hello@quove.co.uk)  
01284 845120  
[quove.co.uk](http://quove.co.uk)


**Flexible Accounting.**  
For business and personal accounting solutions.

3 Brickfields  
Business Park,  
Woolpit




**We're by your side  
every step of the way**





- Home Visits
- Pre-paid Funeral Plans
- Funeral Finance
- Personal Touches
- Direct Cremation
- Bereavement Support Groups and Resources
- Affordable Choices

**Serving Harleston, Diss and Eye**  
11 Exchange St, Harleston IP20 9AB  
**24hr Tel: 01379 853999**  
63 Victoria Road, Diss IP22 4JE  
**24hr Tel: 01379 640810**  
Also branches in Attleborough, Beccles, Bungay, Halesworth and Wymondham.

 **Rosedale**  
FUNERAL HOME  
*A family business, we believe it makes a difference*  
[www.rosedalefuneralhome.co.uk](http://www.rosedalefuneralhome.co.uk)

**CLARITY**  
**Earwax Removal**

Remove unwanted earwax safely  
with Microsuction, using the latest  
otoscope technology.

We have 'pop up' clinics in  
Brockdish & Diss each month,  
or you can arrange a home visit.

For details, please ring  
or visit our website.

Mobile: 07730048842  
Email:  
[Clarity-earwaxremoval@outlook.com](mailto:Clarity-earwaxremoval@outlook.com)  
[www.clarity-earwaxremoval.com](http://www.clarity-earwaxremoval.com)

LOOKING FOR **YOUNG MUSICIANS** TO COME

AND PLAY OR SING AT OUR

# OPENMIC NIGHT

We run a regular OpenMic Night on the 1<sup>st</sup> Friday of the month (excluding Aug and Sept) at Syleham and Wingfield Village Hall and would like to extend an invitation for young singers and/or musicians (10-18yrs) to come and play at our 4<sup>th</sup> July event.

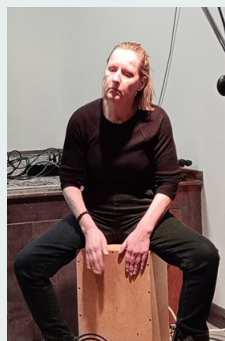


First-timers or more experienced players are welcome and with prior notice we can probably find adults to accompany or support on the night. A single performance or up to three songs. Please contact me for further information:

Roy Goodwin

07768 847 175

roygoodwin53@gmail.com





## Church News

### Wind and fire

Because Easter was unusually late this year, Pentecost falls in June - on Sunday 8<sup>th</sup> June, to be exact. Pentecost is the Greek name for the Jewish festival of Weeks, an early harvest festival. For Christians, it is the day when the Holy Spirit came upon Jesus's disciples in a rushing wind and tongues of fire. The power of the Holy Spirit enabled them to speak in other languages and to tell the polyglot population of Jerusalem the good news of Jesus Christ. So Pentecost marks the foundation of the church.

Jesus described the Holy Spirit as the Helper who would be sent by the Father to teach us everything and remind us of all that Jesus himself had said. The Holy Spirit is still at work and we see the fruit of the Spirit in love, joy, peace, patience, kindness, generosity, faithfulness, gentleness, and self-control. And don't we need all those things today?

The Holy Spirit binds us together. This summer we have lots of events which we hope will also bind us together as we enjoy each other's company. A few highlights: Wingfield's Open Gardens on 31<sup>st</sup> May and 1<sup>st</sup> June; Hoxne's Summer Fair in the churchyard on 7<sup>th</sup> June; our benefice service on 29<sup>th</sup> June at Athelington church which will celebrate St Peter; and our annual Lammas service at Hoxne on 1<sup>st</sup> August. Let's hope that at our events the wind takes the form of a gentle breeze and the fire just warms our hearts and heats the barbecue!

Have a great summer.

**Revd Canon Eleanor Goodison**  
**Priest in Charge, Hoxne Benefice**  
**Tel: 07876 143579**

## Church Services

### Denham, Hoxne, Syleham & Wingfield

**Planned church services for June/July**  
Every Friday: Compline at 6.00 pm on Zoom

#### June

##### *Sunday 1<sup>st</sup> June* *Seventh Sunday of Easter*

9.30 am BCP Holy Communion, Hoxne  
11.00 am CW Holy Communion, Wingfield  
4.00 pm Messy Church, Syleham and Wingfield Village Hall

##### *Sunday 8<sup>th</sup> June* *Pentecost*

9.30 am CW Holy Communion, Redlingfield  
9.30 for 10.00 am Café Church, Hoxne

##### *Sunday 15<sup>th</sup> June* *Trinity Sunday*

9.30 am CW Holy Communion, Hoxne  
9.30 am Village Service, Syleham  
6.00 pm Evensong, Wingfield

##### *Sunday 22<sup>nd</sup> June* *First Sunday after Trinity*

9.30 am BCP Holy Communion, Syleham  
11.00 am CW Holy Communion, Denham  
11.00 am CW Holy Communion, Hoxne  
4.00 pm All Age service, Hoxne

##### *Sunday 29<sup>th</sup> June* *St Peter*

11.00 am Benefice Holy Communion, Athelington

#### July

##### *Sunday 6<sup>th</sup> July* *Third Sunday after Trinity*

9.30 am BCP Holy Communion, Hoxne  
11.00 am CW Holy Communion, Wingfield  
4.00 pm Messy Church, Syleham and Wingfield Village Hall

*Sunday 13<sup>th</sup> July*  
*Fourth Sunday after Trinity*

9.30 am CW Holy Communion,  
Redlingfield

9.30 for 10.00 am Café Church, Hoxne

*Sunday 20<sup>th</sup> July*  
*Fifth Sunday after Trinity*

9.30 am CW Holy Communion, Hoxne

9.30 am Village Service, Syleham

6.00 pm Evensong, Wingfield

*Sunday 27<sup>th</sup> July*  
*Sixth Sunday after Trinity*

9.30 am CW Holy Communion, Syleham

11.00 am CW Holy Communion, Denham

11.00 am CW Holy Communion, Hoxne

4.00 pm All Age service, Hoxne

## *St Andrew's, Wingfield*

The coffee caravan's visit to Wingfield in April was combined with a highly successful Easter egg hunt for younger children arranged by Wingfield Barns. A few days later we held our usual Good Friday service at Wingfield church and then a celebratory service on Easter Day. The coffee caravan will be back on **Tuesdays 17<sup>th</sup> June and 15<sup>th</sup> July.**

We had a very enjoyable and interesting evening with Philippa Langley, at a packed St Andrew's church. Plenty of questions from the audience too!

Philippa's research pinpointed the

Leicester car park where Richard III was buried. Thank you to everyone who came. If you missed her talk, you can catch up by reading her new book, *The Princes in the Tower*.



Speaking of reading, the Book Club discussed *Suite Francaise* by Irene Nemirovsky in April, an extraordinary portrayal of occupied France in the early stages of the Second World War. The book remained unfinished because of Irene Nemirovsky's murder by the Nazis in 1942. In May we chose some lighter reading with *Scoop* by Evelyn Waugh. Future Book Club dates are still to be fixed as we go to print - contact me if you would like to be kept informed.

Don't miss Wingfield Open Gardens which takes place on Saturday 31<sup>st</sup> May and Sunday 1<sup>st</sup> June. This is a major event for the village and a great fundraiser in aid of the St Elizabeth Hospice and St Andrew's church. Do come along and enjoy!

**Revd Canon Eleanor Goodison**  
**07876 143579**

## *St Margaret's, Syleham*

### *Church Wardens' Retirement*

St Margaret's church would like to say a huge thank you to Mary Lewis and Sarah Buckley for their service as church-wardens for our church. They have been a great team and their joint resignation at our Annual Meeting leaves a space hard to fill. The good condition of the church building and the churchyard is mainly down to their work and we now must keep up that record. If anyone is interested in getting involved in the maintenance of the church building and the churchyard, please get in touch.

Mary Lewis has also served the church in several other capacities over more than 20 years, including as Lay Elder and Treasurer. For the last ten years she has been a lynchpin of our *Messy Church* and she has also taken the lead on the

*Cont.*

monthly Village Service. In addition she has offered care and support to many in the village.

Both Mary and Sarah will be very much missed, but the good news is that Sarah is not moving away immediately and Mary is not moving far, so we hope to continue to see them often.

## Save the Dates

The popular **Coffee & Cake**, open to all, continues in the village hall the first Tuesday every month, 10am - 11.30am; any queries should now be addressed to Julie Thompson, [juliethompson435@gmail.com](mailto:juliethompson435@gmail.com)

**St Margaret's** remains open daily and the church and environment provide a welcome place of tranquility - visitors' comments show how much it is appreciated.

**Lorraine Doll**  
[lorraine@syleham.uk](mailto:lorraine@syleham.uk)

\*\*\*



**Thank you again!** to all the people who came along to wish me well at my final church service on Sunday 27th April; it was all so unexpected and I was quite overwhelmed by the moving tribute and the generosity of the gifts. Thank you, one and all, from the bottom of my heart! You are all very special to me and I shall not forget you.

**Mary Lewis**

## Syleham Heritage Walk

The Syleham Heritage Walk was officially opened on Friday 18th May.

Around 60 residents, some in medieval costume, and their dogs came along to the official unveiling of the information board followed by a guided walk of the five mile route.

The walk forms part of last year's 850 year celebrations of Hugh Bigod, Earl of



Norfolk's surrender to King Henry II at The Cross in Syleham in 1174, showcasing the rich history of the buildings and people of Syleham.

The information board, which can be found at Syleham and Wingfield village hall, gives details of the route of the walk and the historic buildings. It was funded by a grant from Babergh and Mid Suffolk District Council and Syleham Parish Council and was developed by members of the Syleham Historical Society.

Thank you to everyone who came along to the opening ceremony, to those that volunteered their help on the day, and to those who took part in the walk. And thanks too, to those residents who talked about the history of their homes and to Jackie Campbell for her sketches of Syleham's historic buildings which have been reproduced on the information board.

The refreshment stop at St Margaret's Church raised £280 for the restoration of the Testament Boards in the church.

A map of the walk can be found on the Syleham Parish Council website: [sylehamparishcouncil.com](http://sylehamparishcouncil.com)

**Lesley Hastie, Jackie Campbell,  
Monica Flounders**  
**Syleham Historical Society**

## St Peter & St Paul's, Hoxne

On 17th May we had our Annual Parochial Church Meeting - more on that next time, but the meeting gives parishioners and the PCC a recap of all that has happened in the previous year - which to be fair, is a lot!

A quick look through my own diary tells me that the weather early on in 2024 was horrendous, high humidity and lots of rain. I remember being shocked when I looked out into the churchyard on the day of our 'summer event' to see the grass was about 1 metre high - we could have hidden a flock of sheep in there! In contrast, the last three months of this year have been very dry. Work on the churchyard is doing well, the grass is mown, the car park has been cleared of spurious weeds (it looks bigger), and tombs have been cleared of saplings. The help from the Community Payback Scheme has been invaluable.

We have plans for a nature trail and information boards but you can look now at the progress made any day or come along to the Summer Event on the 7<sup>th</sup> June (poster on p5) and have a wander round, maybe take a tour of the tower and see the 'big picture'.

At the last PCC meeting the Revd John McCracken was appointed as our representative to the Maynard Trust as Polly Potter stood down. Polly had been in the position for many years - Thank You, Polly.

As usual the Lammas Service will be on 1<sup>st</sup> August, followed by a hog roast. The next two coffee mornings are on **21<sup>st</sup> June and 19<sup>th</sup> July**. All are welcome - it is a chance to socialise with your neighbours.

**Deborah Harding**  
**01379 668190**

### Mothers' Union

There are two events which are open to members and non-members of the Mothers' Union in the North Suffolk Area:

**Wednesday 25<sup>th</sup> June** at 10am at Fressingfield Church, we are holding a Service of Reflection for 'The World We Are Passing On' with Rev Canon Alison Alder followed by a Ploughman's Lunch.

**Saturday 12<sup>th</sup> July**, if you are in Southwold we are fundraising with a pop-up 'Tea by the Sea Shop' in the URC Church Hall, Southwold IP18 6DS. Set tea £5.00.

Cont.

**BATS**  
**WITH**  
**CHEESE & WINE!**

**FRIDAY, 4<sup>th</sup> JULY, 7.45pm**  
**HOXNE CHURCH**

**Tickets: £10 includes cheese & wine buffet**  
**£5 for children**

Discover all you need to know about the bats in the church & churchyard!

Evening led by Sue Morgan from Anglia Ecology

Tickets need to be purchased in advance by  
e-mailing: [cabbott364@gmail.com](mailto:cabbott364@gmail.com)  
or calling 01379 668359



## CORNER CLASSICS & ENGINEERING LTD AGRICULTURAL & AUTOMOTIVE

SPECIALISTS IN CLASSIC CAR AND TRACTOR REPAIR  
AND RESTORATION



OPEN  
MON-FRI 8-5 PM  
SAT 8-12 PM

VISIT THE SHOP FOR

- A RANGE OF LAWN MOWERS AND OTHER GARDEN EQUIPMENT (SOLD & REPAIRED)
- HYDRAULIC HOSE & PTO STOCKISTS
- FABRICATION/ PARTS
- LUBRICANTS, OILS & ANTI FREEZE



07735207494

JAMIE@CORNERCLASSICS.CO.UK

LAXFIELD ROAD, STRADBROKE, SUFFOLK IP21 5NL



## DISS SELF STORAGE

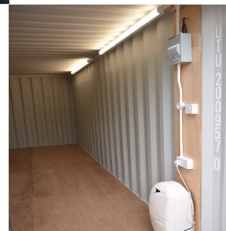
07757 689988

[www.DissSelfStorage.co.uk](http://www.DissSelfStorage.co.uk)



For all your  
Commercial &  
Personal  
Storage Needs

Also Click &  
Collect Boxes  
& Packaging



## DAN TO EARTH ELECTRICAL

[dantoearthelectrical.co.uk](http://dantoearthelectrical.co.uk)

### COMMERCIAL, DOMESTIC & INDUSTRIAL

Covering the whole of Norfolk & Suffolk,  
by choosing Dan To Earth Electrical Ltd.  
you can guarantee a reliable, well-priced  
and high-quality service.

Danny Lamb  
Electrician

Horham, Suffolk  
[danlamb@live.co.uk](mailto:danlamb@live.co.uk)

07756 204 354



01379 384 889

### HANDYMAN SERVICES EYE

All manner of repairs  
improvements & general building  
works undertaken large & small.

Friendly reliable honest work.

Please call Mark

07818 088080

01379 871399



### Safe & Sound Hygiene and Pest Control

For ALL your Domestic  
and Commercial Pest Control

No obligation – Free Survey / Quotes

Call us to discuss your pests

**01379 788865**

[safeandsoundhygieneandpestcontrol.co.uk](http://safeandsoundhygieneandpestcontrol.co.uk)

If you would like information on either of these events, please contact Cathie McGregor. Group Leader 01379 668434  
New members are always welcome at our Fellowship Group.

**Catherine McGregor**  
**Group Leader 01379 668434**

### **Little Lambs**

Little Lambs have not had too many meetings due to the Easter Holidays, but we did join in the fun at Wingfield Barns where we took part in an Easter Egg trail, made Easter baskets and joined in lots of other craft activities.

We were also invited to take Little Lambs into St Edmund's Primary School where the children in Acorns joined us for craft activities and stories around the theme of *On the Farm*. Seventeen children came together to enjoy the fun, making fluffy chicks, woolly lambs, very pink pigs and multi-coloured calves. We also found out about the wild animals that might be seen around the farmyard. We would like to thank the children and staff in Acorns class for making us all so welcome.

Little Lambs will be continuing to meet on the first Tuesday of each month and the third or fourth Wednesday of each month (it will always be two weeks after the Tuesday meeting). The Tuesday sessions are from 12.30-2.30 pm. (don't forget to bring your packed lunch). The Wednesday sessions are 9.30-11.30am.

For further information please contact Caroline at [cabbott364@gmail.com](mailto:cabbott364@gmail.com)

**Caroline Abbott**

### **Suffolk Historic Churches Trust Ride and Stride**

Although September seems a long way away and hopefully we shall have a warm and sunny summer in the meantime, this is just a gentle reminder that the Suffolk Historic Churches Trust *Ride and Stride* event will be taking place once again this year.

As many of you will know this is an important event for us as it raises a significant sum of much-needed money to

help with the preservation and upkeep of our churches.

In addition to encouraging as many participants as possible to take part, we shall need recorders in the church on the day, so if you would like to support us for an hour or two you will be most welcome.

This year the event will take place on **Saturday 13th September** so do make a note in your diary. More details will follow in the next edition of Village Voice.

**David Hyde Local Organiser**  
[davidjhyde@btopenworld.com](mailto:davidjhyde@btopenworld.com)  
01379668467

## **The Maynard Trust**

### **Support for educational needs**

The Trust is there to be used. Its funds are available to all who live in Hoxne, irrespective of age, who might have difficulty in meeting the costs of educational need. Grants are given subject to funds being available by the Trust.

**The deadline for receipt of applications to the Maynard Trust:**

**30<sup>th</sup> June 2025**

**for the July Trust meeting**

Just write or email (preferably the applicant rather than a parent or guardian) to:

Richard Giffin (Trustee)  
54 Low Street, Hoxne,  
Suffolk IP21 5AS

[themaynardtrust@gmail.com](mailto:themaynardtrust@gmail.com)

Please include an email address for quick correspondence.

At the time of writing, the Maynard Trust is building a website to make applications easier. When up and running it can be found at:

[www.hoxnemaynardtrust.org.uk](http://www.hoxnemaynardtrust.org.uk)



*JS & the Lockerbillies*



## *Hoxne's Community Day*

Hoxne Community Day at the pavilion and playing field on Sunday 4th May was a fantastic success, despite the less than ideal weather.

A wonderful turn-out, for which the committee are most grateful, to help with



*Village Voices choir*





*Children's entertainer, Poz*



the running costs of this valuable asset for the village.

Special thanks to all the volunteers who helped to make the event possible. Also the grant aid from Hoxne Parish Council and Mid Suffolk District Council, plus sponsorship from Waveney Valley Trees, Abercrombie Builders, Crown Milling, John Doe furnishing and all those who contributed raffle prizes.



*The Three Chordettes*



## Hoxne Garden & Social Club

It is the first May Bank Holiday weekend as I am writing this. I can acknowledge the abundance of sunshine we have had in April, but also the total lack of rain. I know the situation is bad when all nine of my water butts are running dry! How I would tease my father as he would despair at the lack of rain and how his water butts were empty, and yet years later here I am bemoaning my water butt situation. So as gardeners, here's hoping for rain - preferably only overnight!

In April we had a wonderful talk on Medlars by Jane Steward. Very informative and interesting, a definite alternative to a crab apple in the garden. She also had some medlar jelly and chutney to taste and buy. The jelly was absolutely delicious and many of us went home with a jar.

The Garden Club Committee held a plant sale at the Hoxne Community Day on the Bank Holiday weekend. Typically, the scorching temperatures of midweek were replaced with a freezing north wind. However we had a wonderful array of plants and we managed to shiver through the day and successfully sold a good amount of stock. Thank you to anyone who came by and purchased from us.

Our May meeting on the 15th welcomes Kate Elliott, the head gardener from Columbine Hall. Hopefully some of you managed to attend their open day in April.

On 19th June Colin Thorburn, the President of the East Anglian Orchid Society, will be helping us hopefully with the challenging task of keeping orchids happy.

Heading in to July, we will hold our annual summer garden party on the 17th. This is for garden club members only; the venue is yet to be decided. Details will be emailed to members.

Hopefully by the time this Village Voice

edition reaches you we will have had a good rain to refresh your gardens, the countryside and wildlife. I hope this will help your fruit, vegetables and flowers to be heading on track to enter the produce show in September and help to give us a wonderful display. The entry forms are included in this Village Voice. Go on, have a go at entering

something! It's not terribly serious, just lovely to see what everyone has been growing, making, cooking, sewing etc in the local community.

**Debbie Pye**  
[dilberry64@gmail.com](mailto:dilberry64@gmail.com)



**Harber Carpentry & Restoration**  
For all your building restoration needs

- Timber frame repairs.
- New oak structures
- Window repairs
- Timber doors and frames
- Listed/Historical buildings
- Lime plastering
- All aspects of carpentry

**Saving the past for the future**  
Oliver Harber Contact - 07934 007 616  
Email - [harbercarpentry@gmail.com](mailto:harbercarpentry@gmail.com)

# Hoxne Garden & Social Club

## Flower, Craft & Produce Show 2025

Saturday 6th September

2pm - St Edmund's Hall Hoxne



Prizes and raffle at 3pm  
Tea, coffee and cakes  
served all afternoon



Prizes available for  
1st, 2nd & 3rd place

Trophies awarded for best in section on a points system:  
1st = 3 points, 2nd = 2 points and 3rd = 1 point.



## Children's Section

*Open to children up to 16 years of age. Please ensure you put your age (but not your name) on all entries as a guide for the judge.*

Class 1: Decorate an egg with any materials

Class 2: A piece of artwork in any medium

Class 3: Bake six cookies or biscuits and decorate as you choose

## Adults' Section

### Cooking and Preserves

*All cooking must be covered with cling film, for hygiene purposes.*

Class 4: A Jar of Jam - any fruit

Class 5: A Jar of Jelly - any fruit

Class 6: A Jar of Marmalade

Class 7: A Jar of Chutney

Class 8: A Jar of Pickled/Fermented Vegetables or nuts (eg kimchi, sauerkraut, pickled walnuts)

Class 9: A Jar of Curd

Class 10: Any other Preserve (not those in classes 4 to 9)

Class 11: 5 Brownies/Blondies

Class 12: A Savoury Tart

Class 13: Bread, plain or speciality, oven baked (no bread makers to be used)

Class 14: Any home-made alcoholic drink (eg wine, beer or liqueur)

Class 15: Any home-made non-alcoholic drink (eg cordial, ginger beer, lemonade)

Class 16: Cake baking (recipe provided, Carrot Cake)

## Carrot Cake Recipe

### Ingredients:

115g self raising flour  
1 tsp bicarbonate of soda  
1.5 tsp mixed spice  
200g soft brown sugar  
225g carrots grated  
150g sultanas  
2 eggs, lightly beaten  
150ml sunflower or vegetable oil



### For the topping:

60g soft cheese  
30g softened butter  
225g sifted icing sugar  
1 tsp grated lemon rind

Pre-heat oven to 180°C fan/Gas 4.

Grease a 23cm x 13cm loaf tin, line the base with baking parchment.

Sift the flour, bicarbonate of soda and spices together.

Add the sugar, grated carrot, sultanas.

Stir well then add the oil and beaten eggs.

Mix with an electric mixer for 5 minutes.

Pour the mixture into the prepared tin.

Bake in the pre-heated oven for 50-60 minutes.

Leave to cool a little in the tin then turn out and finish cooling on a wire rack.

For the topping, put all the ingredients into a bowl or food processor and mix until smooth, spread on top of the cake.

Decorate as you choose.

## Craft Section

*Items must have been made by the exhibitor within the last 12 months.*

Class 17: A piece of knitting or crochet work

Class 18: A fabric tool roll to store tools for any activity (eg sewing, knitting, BBQ utensils etc)

Class 19: A piece of sewn fabric work (eg clothes, patchwork, cross-stitch)

Class 20: A piece of art work, any medium

Class 21: A piece of hard handicraft (eg pottery, woodwork, jewellery)

## Photography

*All photos must have been taken by the exhibitor within the last 12 months. Maximum size 20cm (8ins) x 15cm (6ins).*

Class 22: Best of British

Class 23: Winter

Class 24: Eyes

Class 25: Tools of the trade

*These are the Photography Classes for next year's show, 2026:*

*Class A: Insects*

*Class B: Details*

*Class C: Black and White*

*Class D: Unfinished*

## Fruit and Vegetables

*All produce must be grown by the exhibitor.*

Class 26: 3 Carrots with Foliage

Class 27: 3 Runner Beans

Class 28: 3 Potatoes

Class 29: 3 Tomatoes with stalks on - **NOT** cherry types

Class 30: 5 Cherry Tomatoes, stalks on

Class 31: 3 Courgettes

Class 32: 3 Onions

Class 33: Any Other Vegetable (not those in classes 26 to 32, one only)

Class 34: The Heaviest Tomato

Class 35: A Collection of Vegetables (only one of each) of THREE distinct kinds. *(Parsley may be used as decoration / garnish but is not classed as one of the vegetables)*

Class 36: Wonkiest Vegetable (the most amusing, misshapen vegetable)

Class 37: 3 Pears

Class 38: 3 Apples

Class 39: 3 Plums / Gages

Class 40: 5 Soft Fruits (eg blackberries, raspberries, strawberries etc with stalks)

Class 41: Any Other Fruit (not those in classes 37 to 40, one only)

## Flowers and Foliage

*All exhibits must be grown by the exhibitor.*

Class 42: A Single Rose in a vase

Class 43: 5 Stems of Garden Flowers in a vase

Class 44: 3 Dahlias in a vase

Class 45: 5 Different Herb Stems/ Sprigs in a vase

## Floral Art

*Bought or garden flowers may be used in the following classes.*

Class 46: A bouquet using hot colours

Class 47: A table centre (no larger than 25cm diameter)

Class 48: A corsage







**Armed Forces Veterans  
and their families -**  
**we are delighted to share  
some exciting news with you.**



Citizens Advice Mid Suffolk has been awarded funding from the Veterans' Foundation to launch **Veteran Connect** - a brand-new initiative supporting Armed Forces veterans and their families across Mid Suffolk.

This project, initially funded for one year, will deliver accessible, impartial, and non-judgmental support, with a particular focus on veterans living in rural communities. Many of these individuals face significant challenges in accessing vital services such as healthcare, housing, and employment.

**Veteran Connect** will help bridge these gaps by offering personalised, localised support and improved access to existing services.

At the heart of this project is a dedicated **Veteran Connect** Adviser, who will work closely with individuals and partner organisations to ensure that no veteran or family member is left behind.

We will be working collaboratively with local organisations to:

- Improve access to services for veterans and their families
- Reduce duplication across the support landscape
- Enhance the quality of advice and guidance provided in our community

As the only Advice Quality Standard-accredited organisation in Mid Suffolk for benefits, debt, and disability advice, Citizens Advice Mid Suffolk is well positioned to deliver high-quality, trusted support to those who need it most.

You will find more information on our website <https://midsuffolkcab.org.uk/> under '**Veteran Connect**'.

**Citizens Advice drop-in sessions at Eye Library**

**Fridays, 9.15 am – 12.30pm**

**You can also contact Citizens Advice directly on 01449 676060.**



# YOGA

**www.Brenda Louw.co.uk**



**Classes & Workshops in Needham**

**All ages and abilities Tel: 07791 385240**



- \* Please clearly write the class number and class name you wish to enter. You may also continue the list on another page
- \* You can enter as many classes as you like. Entry fee is 30p per class; children's entries are free
- \* **PLEASE REMEMBER, ONE EXHIBIT PER CLASS ONLY**
- \* Please return this form and money to Jeanette Lerwill, 15 Cross Street, Hoxne, IP21 5AJ or Julie Coop, Downbridge Farm, Abbey Hill, Hoxne, IP21 5AL
- \* **Children (16 and under), please put your age on the form**
- \* **Individual entries only (no team or joint entries)**
- \* **Please submit entry forms by Thursday, 4th September**
- \* Exhibits to the hall on 6th September from **9.00am** - Doors close at **10.00am** for judging

Name: .....

Address: .....

**Email/Phone no. (for Show use only):** .....

[illegible]



# TREE MENDERS

Environmental Arboriculture

TREE SURGERY.  
HEDGE CUTTING/LAYING.  
FIREWOOD.



TREE PLANTING.  
TREE FELLING.  
STUMP GRINDING.

Free Quotes and advice.      Established 2004. Fully qualified and insured.

treemenders@yahoo.com      01379 853070      07905 750070  
www.treemendersnorfolk.co.uk



## J. FELTON

CHIMNEY SWEEP

» CLEAN & FRIENDLY SERVICE

» FULLY INSURED

» SMOKE TESTS

» INSURANCE CERTIFICATES

» CCTV INSPECTIONS

» COMPETITIVE RATES

**PLEASE CALL 01986 799175**



REGISTERED MEMBER OF THE INSTITUTE OF CHIMNEY SWEEPS

## UNDER ONE ROOF

### THE COMPLETE HARD LANDSCAPING SERVICE

DRIVEWAYS, NATURAL  
STONE PATIOS, DECORATIVE  
WALLING, WATER FEATURES,  
ENTRANCE GATES & FENCING.

PRESSURE WASHING CLEANING  
OF PATIO AND DRIVEWAYS

FULLY INSURED FAMILY  
BUSINESS WITH  
OVER 20 YEARS EXPERIENCE

FOR A FREE NO PRESSURE  
QUOTATION PLEASE CALL  
MARK ON 01379 677027 OR  
07768 636618



## CRYSTAL CLEAN

Specialist Cleaning Services

Carpet   Hard Floor   Upholstery

07984 648 296   01379 678 806  
info@crystalclean.services  
www.crystalclean.services



# SEPTIC TANK SERVICES

- INSTALLATIONS • EMPTYING • SERVICING •
- REPAIRS • DRAIN JETTING •
- DRAIN CAMERA SURVEYS •
- DRAINAGE WORKS • DIGGER WORKS •

**LENNY JOLLY   07905 794221**  
www.septictankservices.co.uk




## HOXNE'S LOST PALACE

One historical fact that is largely unknown about Hoxne is the importance it once played in the religious history of our corner of Suffolk. There was a church at Hoxne dedicated to St Ethelbert before the Conquest, and an episcopal see was established here following the disruption of the Danish invasions in the latter part of the 9<sup>th</sup> century. The Vikings swept away these East Anglian bishoprics, and it wasn't until about 920 AD that Bishop Theodred of London came to Hoxne on his mission to re-organize the diocese and establish what he called his bishopric. When he died in the mid-10<sup>th</sup> century, his will referred to his 'episcopal demesne' at Hoxne. It is clear also from his will that the church here was a minster, or mother church for a large area, served by a community of priests who would have lived adjacent to it in what was grandly described as a "palace". In the time of his successor, Theodred II, who also held the title of Bishop of Hoxne, this building had become one of his principal residences in Suffolk. The Vicarage now stands on the site.



### *But why choose Hoxne?*

In 869, the Danes once more set sail for East Anglia with an army of 20,000 men but, due to adverse weather, landed in the north of England. They rapidly travelled south destroying much in their path, until they were met by the Saxon king, Edmund, near Thetford. A furious battle ensued, with no obvious victor, and Edmund fled - only to be pursued to where contemporary chroniclers called Hoxne. And the rest is history as they say, or in truth probably mostly legend. The king was captured, tied to a tree, beaten and shot to death with arrows. Then, cruelly, his head was cut off and thrown into some bushes. As a result of tales woven around these events, a cult soon developed at Hoxne. Edmund was regarded as a saint and no less than two small chapels erected, one where he supposedly died, and the other where his head was found. This latter became the site of the later Benedictine Priory, now Abbey Farm. Pilgrims soon flocked to the village to pray and inspect such holy relics as were present.

*To be continued...*

*Chris Johnson*

**SUNDOWN**  
GUITARS  
Set ups, Servicing  
Re stringing and Repairs  
Accessories & Spares  
Chickering Corner Farm, Hoxne IP21 5BT  
Please phone to discuss your requirements  
or to make an appointment  
**07958 758 602**

**ACORN TREES**  
Professional advice & work  
Tree Surgery, Crown Reductions, Section  
Felling, Dead Wooding, Felling, Hedge  
Management, Landscaping, Fencing  
**ADAM PICKESS**  
**Telephone: 01379 588122**  
**Mobile: 07776 235006**





**Daily Care  
Suffolk  
Ltd**

**ARE YOU LOOKING FOR EXTRA CARE AND SUPPORT  
TO HELP YOU REMAIN INDEPENDENT  
WITHIN YOUR OWN HOME AND COMMUNITY?**

Daily Care Suffolk (previously known as The Daily Care Agency, established 2005) is a locally based, small and friendly team of carers providing the local community with trustworthy and reliable home care for the elderly.

**ARE YOU A CARER?  
ARE YOU LOOKING FOR A CAREER CHANGE?**

We are currently recruiting kind, caring individuals in this area. Previous experience is an advantage but not essential, as full training and mentoring will be provided.

***WE TAKE PRIDE IN HAVING TIME TO CARE,  
AND OFFER INDIVIDUAL SUPPORT  
TO OUR CLIENTS.***

You will have the opportunity to:

- \* Work flexible shift patterns
- \* Be paid above the living wage rate, with mileage pay and paid travelling time between clients
- \* Be part of a small and friendly team.

For further information, please contact:  
01379 388438 or 07535 077081  
or email: [OFFICE@DAILYCARESUFFOLK.CO.UK](mailto:OFFICE@DAILYCARESUFFOLK.CO.UK)

HIGH BANKS  
ATHELINGTON ROAD, HORHAM, EYE, SUFFOLK IP21 5EH

## ***What a Joy!***

*by Wingfield resident, France Demetriadi*

It was the end of April. Winter had been so long with its cold weather, disturbing winds, pouring rain, even hale and storms. What a calamity! Not being able to make up its mind, the climate's constant changing mood had enveloped every one of us in its dullness, sadness and miserable atmosphere.

The sun tried again and again to break the thick clouds with no success. Day after day, people sank a bit lower, feeling down, looking for a sign of hope and stability, awaiting better days against all odds.

### ***Then something happened:***



a little bit of fading green timidly shows its face. Pale green at first, whispering a delicate tone to capture my attention. A bud getting confidence with deeper green and pink opening up. WOW!

Growing bigger and colourful with alizarin crimson appearing out of the blue, a new bud, a miracle! Still flourishing now with deeper reds popping out everywhere, making my heart burst with new life.

My beautiful rhododendron,  
symbol of life, hope and  
health.

## ***What a joy!***

The fun never stops at St Edmunds Primary School!

All of our wonderful pupils have experienced some amazing school educational visits, to Norwich Science Museum, Suffolk Farm and Country Fair to name just a few!

Our Easter celebrations were really EGGCITING this year with the children participating in a Decorated Egg Competition - this was really successful with over 40 entries received!! Judging was EGGTREMELY difficult! The whole school also walked to the church and shared poems, Easter story readings and prayers, and some great songs which were sung with a great deal of enthusiasm!

As we move into the Summer term our thoughts focus on our End of Year events, including Sports Day on Friday 4<sup>th</sup> July at the Hoxne Playing Field, our Leavers' Production and of course more visits - including Years 5 and 6 off to Harry Potter World, Years 3 and 4 visiting Kentwell Hall and Years 1 and 2 experiencing the joy of the Hippodrome Circus!

At our Sports Day we will be holding an event to support the Mothers' Mercy Home Project in Nairobi. As a whole trust, all schools are contributing to one goal - providing sit-down toilets to the home for the 95 children that live there. Already our pupils are becoming pen pals with the children and will be running stalls to raise money at the end of the afternoon. Staff have also volunteered to get soaked to the highest bidder!!!

It is also a very reflective time as we say goodbye to our wonderful Year 6 pupils who have been an absolute credit to the school and their parents!

***Simon Lea***  
***Academy Head***  
***Waveney Valley Partnership of Schools***



## Mobile Barber & Hairdresser

Affordable prices

All in the convenience  
of your own home

Tel: 01379 384186 / 07982 538252

[Dapperanddivine24@gmail.com](mailto:Dapperanddivine24@gmail.com)



Catholic Parish of  
The Most Holy Trinity  
Church of St Henry Morse  
Shelfanger Road, Diss IP12 4DX  
Parish Priest: Father Alex Anaman

Tel: 01379 642914  
[parishpriest@holytrinitydiss.plus.com](mailto:parishpriest@holytrinitydiss.plus.com)

### Mass Times

Saturday: Vigil Mass 6pm  
Saturday: 10am  
Sunday: 10am  
Wednesday & Friday: 9.30pm  
No Mass Monday, Tuesday or Thursday

Please check the website and newsletters  
for Mass times on Holy Days  
Confession: Saturday 10:45

Contacts:

[office@holytrinitydiss.com](mailto:office@holytrinitydiss.com)

[alex.anaman@rcdea.org.uk](mailto:alex.anaman@rcdea.org.uk)

## K.G. READ & SON PLUMBING & HEATING CONTRACTOR

- BOILER INSTALLATION,  
SERVICE & REPAIR.
- OIL TANK REPLACEMENT.
- BATHROOM & SHOWERS  
INSTALLED INCLUDING  
CERAMIC TILING.

MARCUS READ  
01379 668328  
07710 757334

ORCHARD HOUSE,  
HECKFIELD GREEN, HOXNE

## Traditional Oak Carpentry

Carpentry Repairs

New Oak Homes  
and Extensions

Garden Structures

Condition Reports

3D Design Service

01449 768817

[www.traditionaloakcarpentry.co.uk](http://www.traditionaloakcarpentry.co.uk)

## Hoxne Heritage Group

[hoxnehistory.org.uk](http://hoxnehistory.org.uk)

On Tuesday 17<sup>th</sup> June members will meet at The Swan in Hoxne at 7.30pm to chat and discuss the group's news, business and plans. The general public are welcome to sample a trial members' meeting or two without joining the group.

To learn more and possibly to become a member of the Hoxne Heritage Group, please visit our website at [www.hoxnehistory.org.uk](http://www.hoxnehistory.org.uk). On the website you will find a host of useful and interesting facts, information and photographs and will learn much more of the fascinating history of Hoxne and surrounding villages. The cost of joining HHG is very modest at just £10 per year and gives a reduced cost of just £3 when attending our talks at the village hall. The members' meetings at The Swan are subject to a small charge of £1 per person.

### Tithe Wars in the 1930s

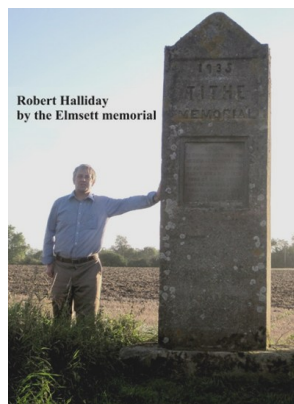
On the 15<sup>th</sup> July all members of the public are invited to Hoxne village hall again for a talk entitled, "Tithe Wars in the 1930s", given by Robert Halliday.



It is a little known fact that East Anglian farmers continued to pay Tithe into the twentieth century. During The Depression of the 1930s, Tithe payments

became an impossible burden, sometimes more than a farmer's annual income. Farmers and agricultural workers across Suffolk, Norfolk and Essex united to resist Tithe by various forms of passive resistance, in which Tithe holders were mercilessly ridiculed. Some farms were even besieged by Tithe owners. "The Tithe War" is one of the lesser known episodes in recent East Anglian history. Robert Halliday, local historian and prolific author, hopes to deliver an entertaining and fully-illustrated lecture on the subject.

As usual this talk will start at 7.30pm and will cost £5 at the door (or just £3 for HHG members). The bar will be open from 7pm and all members of the public are welcome.



**Rob Hooker, Publicity Officer**



# Fressingfield Medical Centre



## Staffing update

We've had some recent staff changes at the Medical Centre and thought we would update you all. **Dr Morris, Dr Manto, Dr Mackay and Shelley Dimmock** still work with us but many of you would be familiar with Wendy, one of our Advanced Nurse Practitioners. Wendy has retired, and recently **Duncan Saunders**, an Emergency Care Practitioner has joined us to provide on-the-day and pre-bookable appointments. Duncan is able to prescribe, and has an extensive skill base, so you may see Duncan rather than a GP when you visit us.

In addition, we have a team of paramedics (**Paddy, Liam, Steve and Beth**) who work with us on a rotational basis and who are able to offer on-the-day appointments.

Recently **Freya Johnson** has joined the team as our Clinical Pharmacist. You may hear from Freya concerning your medication, for medication reviews or regarding prescriptions.

We also have **Sophie, Holly, Kitty, Carolyn, Britt and Katherine** on our dispensary team to help bring the team back to full capacity. They process and dispense prescriptions for our patients in the local community.

**Hephzi Bowen** is joining us as a new Practice Nurse.

**Anna Gray** and **Linda Stallard** are our new Phlebotomists. **Jess Stanton**, our new Assistant Practice Manager also does one Phlebotomy clinic per week.

**Katie Civil** has retired from her Practice Manager position and **Laura Corrick** has left her role as Assistant Practice Manager. **Clare Good** is your new Practice Manager, with **Jess Stanton** as Assistant.

## What is a Patient Participation Group (PPG)?

The PPG for Fressingfield and Stradbroke medical centres are a group of patients who are registered with the practice and help represent the interests of the wider group of practice patients, acting as a link with the Practice Manager and Practice Partner.

They meet at 8-10 week intervals, helping to build a stronger relationship between the practice and patients. They get actively involved with assisting at flu clinics and helping when the practice requires additional personnel, such as Healthwatch surveys.

In addition they represent patients to influence the wider healthcare provision in our area.

The PPG will challenge the practice management team should there be reasonable issues brought to their attention from patients and are always keen to hear from patients about their experiences, both good and bad, that can be taken forward on their behalf - particularly if there is a common theme to those concerns. There is no guarantee that a solution can be found, however the issue can be raised in a formal way with the practice.

If you are interested in joining the PPG then by all means go to:  
<https://www.fressingfield-medical-practice.co.uk/contact1.aspx>  
for more information.

**Judy Lilley - FMC PPG Chair**



- ◆ All household plumbing
- ◆ Oil and gas boiler installations
- ◆ Hot water cylinder installations
- ◆ Water softener installations

**Local, professional and reliable service**    **Free non committal quotes**

**07749315908**  
[chrisjhoward5@googlemail.com](mailto:chrisjhoward5@googlemail.com)  
[www.chrishowardplumbingandheating.co.uk](http://www.chrishowardplumbingandheating.co.uk)

## Hoxne Phoenix Group

Our group, once again, has a full itinerary as we head into summer. At the time of writing, we are yet to visit East Ruston Old Vicarage. Let's hope this wonderful spring weather stays with us.

During the spring we welcomed Linda Scoles who, despite coming from two prolific breeding families, had much angst during her teenage years in relation to her sex education! Then what a thrill it was to listen to Michael Bartlett, an accomplished scriptwriter and author. Many of us have since bought one of his highly recommended novels. We will be educated by Celia Graham in May who will be telling us about working life in the 1930s at Ickworth House.

### *Medieval Call the Midwife*

On **Tuesday, 10th June** our guest speaker is Dr Joy Hawkins, whose talk will be *Call the Midwife*. Joy is a medical historian by training, and a tutor in humanities and history at the University of East Anglia. The *Call the Midwife* talk takes a light-hearted look at how medieval women tried to conceive a child and the guidebooks and manuals providing detailed instruction that they drew on. Joy will also look at when births went wrong and the realities of medieval life. Her presentation promises to be fascinating.

### *Interested in bees?*

John Brownfield from Waveney Beekeepers Group will be our guest speaker on **Tuesday, 8th July**. The group consists of over 100 beekeepers and associate members from the Waveney area and beyond. The key aims of the Group are:

- to promote the craft of beekeeping and encourage sound practices in the management of bees.
- to advance the education of schools and the public in the importance of bees in the environment.
- to provide services like swarm collection to the public.



### *Felbrigg Hall*

Our group is planning a trip in the autumn to Felbrigg Hall, one of the most elegant houses in East Anglia. It is a mixture of opulence and homeliness, reflecting Felbrigg's vibrant history. The decorative and productive walled garden is a gardener's delight. There is a lake plus 520 acres of woods and waymarked trails. Watch this space for the date. National Trust members will only have to pay for transportation.

The Phoenix Group meets monthly on the second Tuesday at 7.30 pm in the lounge of Hoxne village hall. We also meet monthly for a local walk and again for a coffee and chat. New members and guests from Hoxne and surrounding villages are always welcome.

**Daphne Cook**  
[Daphnec.cook@gmail.com](mailto:Daphnec.cook@gmail.com)

## **Nick Fulcher**

**Plasterer & Floor Screeder**  
**FREE ESTIMATES**

**Telephone 01379 642979**

## **R GRITTON**

**Professional Decorators**  
**High quality, reliable service**

**For all your interior and  
exterior requirements**

**Telephone: 01379 586768**  
**Mobile: 07766 982600**

Hexpek.it

## Frustrated? We Can Help You!

Understandable  
Computer Repair  
Tuition & Support

Fast  
Friendly  
Local  
Call Us

PCs, Laptops, Printers,  
Tablets, Virus Removal,  
Tune Ups & Upgrades,  
Broadband Problems,  
Networks etc.  
Personal Tuition  
& more



07908 222428 - [www.callthecomputerguy.co.uk](http://www.callthecomputerguy.co.uk)

## G.G. EVANS

### Pest Control Services

07795 177695

01379 608932

[info@ggevens.co.uk](mailto:info@ggevens.co.uk)

**MOLES, RABBITS,  
WASPS & MORE**



Debbie Corbyn Counselling

Person Centred Support  
for  
All Ages

07935 122685  
[debbiecorbyn9@gmail.com](mailto:debbiecorbyn9@gmail.com)

• Anxiety • Stress • Low Mood • Feeling Lost  
• Low Self Esteem • School Anxieties • Behaviour  
• Anger Management & Attendance

Over 20 years experience

## Michael Last Landscapes

HARD and SOFT LANDSCAPING  
PROPERTY MAINTENANCE  
INTERIOR/EXTERIOR PAINTING

07342 880254

01379 669006

[last.michael@btinternet.com](mailto:last.michael@btinternet.com)

## Wingfield & District Garden Club

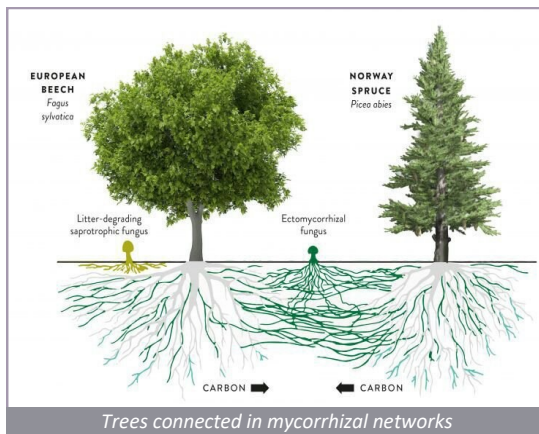
Jim Paine was our speaker in April, on the topic of The Secret Life of Plants. We heard about the origins of Earth, the seasons and the formation of the moon - the principle driver of the tides.

Jim explained the evolution of plant cells, how algae and seaweeds evolved in a wet, weightless, benign environment in a tidal zone, which meant only these survived in those places. Other plants evolved to survive on dry land or in damp shady environments, eg Japan's moss gardens. Natural selection can be seen in plants adapted to challenging conditions, eg cacti in desert habitats or eryngiums growing in sand dunes.

Grasslands cover 30% of our planet and use wind pollination to reproduce. Earth's 400,000 flowering species also use animal vectors to reproduce, especially the bee. Bees and flowering plants have co-evolved; bees see ultra violet light and pigments which are known as 'invisible bee colours'. Moths, humming birds and bats are also important pollinators.

Jim explained how plants collaborate and co-ordinate to form communities

below ground to feed and nurture the soil, forming complex eco systems. We were shown how tree communities growing together in woodland and small copses support each other, and how older trees feed younger trees - not always of the same species.



Our 29th May meeting will be taken by Helen Chen, who has been collecting bamboos for over 20 years since falling in love with them whilst living in China. The topic is Asian Woodland Plants, focusing on plants from China and Japan.

We then take a summer break and our next meeting will be on 25th September in Brundish village hall at 7.30pm.

**Lyn Edwards**



**GOLDBROOK**  
BOARDING KENNELS & CATTERY  
Nuttery Vale, Hoxne, Suffolk IP21 5BB  
Telephone 01379 668267  
info@gbkac.co.uk



"Our Team"

**Proudly owned and run by  
Sara & Don Warren**

Please feel free to pop in and meet us,  
we will be happy to show you around

**OPENING TIMES**

**Monday - Saturday 8.00am - 12 noon  
and 3.00pm - 6.00pm**

**Sunday and Bank Holidays  
9.00am - 12 noon**



## **B.C. GODDARD**

INTERIOR / EXTERIOR  
PAINTER, DECORATOR  
PROPERTY MAINTENANCE

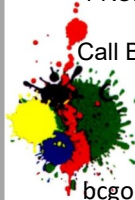
Call Brian for a free quote on

**01379 388174**

or mobile

**07759 956627**

[bcgoddarduk@outlook.com](mailto:bcgoddarduk@outlook.com)



## **Michael Bloomfield Electrical Services**

Part P Compliant



All Domestic & Commercial work  
Fuse boards, Fault finding  
New wiring / re-wiring  
Testing & Inspection  
EICR

**07590 507307**

[www.bloomfield-electrical.com](http://www.bloomfield-electrical.com)



## **SCOTT REGAN** CHIMNEY SWEEPING

Professional, clean & qualified service

- Industry standard certificate issued with every sweep
- Brush & HEPA filtered vacuum • Power sweeping
- Chimney cowl fitted • Tar removal from chimney
- Full public liability insurance

Tel: 01379 678881

Mob: 07962 207846 / 07740 008456

Email: [info@scottreganchimneysweeping.co.uk](mailto:info@scottreganchimneysweeping.co.uk)

[www.scottreganchimneysweeping.co.uk](http://www.scottreganchimneysweeping.co.uk)



## **SCOTT REGAN** WINDOW CLEANING

- All domestic & commercial windows cleaned
- Inside and outside cleans available • Builders first cleans • Solar panels cleaned • Fascias, soffits & gutters cleaned • Conservatory roofs cleaned
- Patio & driveway cleaning also undertaken
- Full public liability insurance

Tel: 01379 678881 Mob: 07962 207846 / 07740 008456

Email: [info@scottreganwindowcleaning.co.uk](mailto:info@scottreganwindowcleaning.co.uk)

[www.scottreganwindowcleaning.co.uk](http://www.scottreganwindowcleaning.co.uk)

## **Ed's PLAICE**

### *Traditional Fish and Chips*

- Wednesdays: serving from 3 - 7pm  
PULHAM MARKET, The Green
- Thursdays: serving from 4 - 7pm  
HOXNE, The Playing Field Pavilion
- Fridays: serving from 4 - 7pm  
WORTHAM, Common

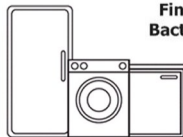
**Tel: 01379 741967**

**Mob: 07904 231006**

Doug Aiken part of

## **DK Appliances Ltd**

**Domestic Appliance Repairs,  
Sales of New and Reconditioned Machines**



**Finbows Yard, Station Road,  
Bacton, Stowmarket IP14 4NH**

**Telephone:  
01449 780398**



## **JD Tree Services** & COUNTRYSIDE MANAGEMENT LTD

- Tree removal, felling or reduction
- Site clearance
- Hedge cutting
- Stump grinding
- Chipping
- Waste removal

Professionally trained, fully insured,  
friendly service  
Call today for a free no obligation quote

**City &  
Guilds**  
**NPTC**  
Qualified

tel: 01379 671285/07736 311782

email: [info@jdtrees.co.uk](mailto:info@jdtrees.co.uk)

web: [jdtrees.co.uk](http://jdtrees.co.uk)

**Checkatrade**

## Harleston Choral Society

Harleston Choral Society welcomes you to its 25<sup>th</sup> Anniversary Concert, on

**Saturday 28 June** at 7.00 pm in Harleston Sancroft Academy.



We'll be singing Carl Orff's *Carmina Burana* with professional soloists and orchestra, and the school's choir.

Further information about HCS can be found on our website: [www.harlestonchoralsoc.org.uk](http://www.harlestonchoralsoc.org.uk)

## University of the 3rd Age, Diss

*United Reformed Church, Mere Street, Diss*

Our monthly meeting takes place on the morning of the first Thursday of each month at the United Reformed Church in Mere Street, Diss, IP22 4AD. Forty-five minutes are allocated to refreshment, socialising and catching up on the interest groups and notices. This is followed by a talk from an interesting guest speaker.

On the 5<sup>th</sup> June, Sarah Spooner will give a talk on 'The Norfolk Landscape in ten maps'

On the 3<sup>rd</sup> July, speaker Lisa Harris's talk will be: 'The Food Museum at Stowmarket.'

Doors open at 9.45am and the meeting commences at 10.30am. Refreshments are available until 10.15am.

For information about U3A Diss: <https://diss.u3asite.uk/>

## Waveney Heritage Centre

*Brockdish IP21 4JP*

The museums are now open twice each month until October, the second and last Sundays in the month. Work is ongoing to have a vintage synthesiser installed in one of the ground floor rooms at the Centre. It is then hoped to give demonstrations to visitors. Entrance to both the exhibit areas is £3 per person. In the radio museum a temporary exhibition on Murphy Radio has been set up, illustrating the history of the company and the designers who were commissioned to design radios that were unique at the time, notably RD Russell (who went on to design Utility furniture after WWII).

On **Saturday 14th of June** the centre is co-ordinating a garage sale in Brockdish, with some stalls in the Heritage Centre itself and the remaining ones scattered throughout Brockdish. An ideal opportunity for residents to off-load unwanted items and for others to pick up a bargain. There will also be a barbecue.

On **Wednesday 25th June** there will be a conducted tour of Harleston led by Gordon Lascelles highlighting how the war affected Harleston and its residents. The walk starts at 6.30pm underneath the arch of the Swan Hotel, Harleston. Please bring an umbrella just in case it rains.

Waveney Heritage Centre is desperate for volunteers to help in the museums and at the regular talks held in the Centre. If you would like to help, please get in touch or indeed come and have a look at what we do. We are situated on the road going out of Brockdish towards Thorpe Abbots.

**Chris Parkin**  
[waveneyheritage@gmail.com](mailto:waveneyheritage@gmail.com)  
[www.waveneyheritage.com](http://www.waveneyheritage.com)  
[www.waveneywireless.org](http://www.waveneywireless.org)

## *Fressingfield Scouts*

After Easter, British Summer Time and the changing seasons have given us light evenings. The weather has been warm and dry, and we've been outside a great deal of the time.

Conversely before Easter, Pioneer Scouts and both Tigers and Wolves Cubs have needed dark evenings to look at the night sky and the planets. They went to the Norwich Astronomical Society Observatory at Seething to use their big telescopes to learn more.

During the Easter break a small group were out on local footpaths on a 4-mile map-reading practice for the Pioneer Troop Expedition Challenge Hike in a few weeks. A lovely Saturday morning, with good sharing of skills to keep on track.

At the end of April you may have seen Pioneer Scouts out and about around the village in small groups on a Scavenger Hunt, taking photos of random objects to match a set of complicated criteria in the brief. They were so successful at this



*Explorers' camp fire*



*Bow drill fire-starting*

that they were back to the HQ much sooner than expected and the Leaders had to set another Hunt for items around our site! Again, this was a very successful evening with some excellent team work, planning and focus. On a less active evening they cooked samosas and discussed why different parts of world have different food and diets.

Explorers had an evening in our outdoor space trying to start fires with flint and steel, and bow drills, with varying degrees of success. Eventually they got a fire going and finished with s'mores and hot chocolate.

Explorers and Adventurers Scouts are working together much more and have been checking the lightweight camping stoves and using them to make tea. It seems that in the right conditions, it is possible for a 12-year-old Scout to take 90 minutes to boil enough water to make two cups of tea! They've also had a very relaxed campfire and toasted marshmallows. On a more intense evening they practiced air rifle shooting, axe throwing and archery. In a twist on the Manhunt game they've been out trying camouflage techniques to stay hidden and trying to creep up on each other in long grass. This went better as the light faded.

In the Cub Sections Wolves have worked on communication, learning about morse code, sign language, code cracking and naval flags. After Easter they restarted with a session of games inside and out; the biscuit and drink midway were very much needed.

Tigers tried out home help skills with tea making and window cleaning and started on their Digital Badge. After half term Tigers Cubs have also enjoyed outdoor games and challenges including building a Da Vinci Bridge, which can be built with interlocked poles but no ropes.

Younger Sections, Beavers and Squirrels, continue to make good use of the weather and light evenings to work on teamwork and life skills through games and challenges.

Ninja Beavers spent an evening building Lego towers in small groups, showing some really good teamwork and strong building. They were enthusiastic about clearing up and putting it all away as well. They've also learned about endangered animals and written their own set of rules for conduct during meetings.

Warrior Beavers have been looking at parts of the Builder Badge and had a try at making a marble run. They're going to have another go at making a more impressive one soon.



*Squirrels sampling fruit kebabs*



*Axe Throwing*

Squirrels have used this time to start on their Let It Grow Badge and have sown broad beans and sunflowers. They had fun on the climbing equipment, had a visit from some very small chicks and made and ate fruit kebabs.

One warm and sunny March Sunday, Pioneer Troop Scouts were pleased to be involved with some Community Service at the Hoxne Village Litter Pick.

We were very pleased to be involved in the Fressingfield VE80 Day commemoration and provided Standard bearers, a bandsman and candle and lantern bearers.

We have our Open Evening on **Friday 18<sup>th</sup> July** from 7pm. Please come and see what we do and meet our Leaders, Trustees and young people. Bar, barbeque and café all evening.

There is lots of information about us on our website: [www.fressingfieldscouts.com](http://www.fressingfieldscouts.com) and if you would like to know more, email our Group Lead Volunteer at: [gsl@fressingfieldscouts.com](mailto:gsl@fressingfieldscouts.com) or speak to any Leader.



## The Magnificent Cedar of Lebanon

The clue to where this tree comes from is in the name, the mountains of Lebanon in the eastern Mediterranean. Its Latin name is *Cedrus Libani*. How the cedar first came to England is not recorded, but most likely small saplings or cones were brought here by visitors, returning travellers or diplomats during the 1640s. The Cedar is an ancient tree and claimed to have been used for building by the pharaohs and Solomon's Temple on the mount in Jerusalem, hence its other name The Tree of God. Although much diminished and under threat from climate change, there are still a small number of groves that survive today with some trees thought to be over 1000 years old, in what is now a UNESCO World Heritage Site.

One of the first cedars here in England and still standing can be found in a rectory garden in the Thames Valley and was planted by Dr Pocock. He brought it home in 1664 when retiring as the Chaplain to the embassy in Constantinople. The good Doctor may well have passed cones around to his family and friends as it is said that cedar trees planted at Wilton House in Wiltshire came from Pocock's brother, chaplain to the 4<sup>th</sup> Earl of Pembroke. During the seventeenth century and later it was quite usual for travellers to bring home seeds, cones and even small saplings which they would pass around family and friends. There are accounts of other cedars planted in the 1670s growing around the country - in the Chelsea Physic Garden in London, and still standing at Apethorpe Palace in Northamptonshire.

In the middle of the eighteenth century, at the height of the Georgian era when George III was on the throne, the cedar

became the most fashionable of trees to plant in your new landscape garden, particularly if your garden had been designed by one of England's most famous designers, Lancelot 'Capability' Brown. At this time, very few people knew how the cedar matured, with its great height and flat top. Brown may have seen some of these earlier trees and designed his landscape around that idea, but he would have only been planting small specimens, not really knowing how they would look hundreds of years later. How right Brown was; just look at them today. Again like the Sequoia, they are still standing in their full glory in many of our major national gardens, like this one at Ickworth, Bury St Edmunds, which must have been planted in the height of the Georgian era.



*A mature cedar at Ickworth Park*

There is one nearer to home, just off the A143 between Diss and Harleston. When you come to Thorpe Abbotts, just past the church on your left, set back from the road is Thorpe Hall, a late Georgian house built around 1800 - with a mature cedar in the front garden. This cedar was most likely planted at the time of the new house, and is now over two hundred years old. It is a wonderful example of a mature cedar.



*The cedar at Thorpe Hall*

*Next time: The Monkey Puzzle. SBT*

## New Reeding Woods

May has started cold but still very dry. The pond has continued to do well after its clean-out. The newts are happily swimming about and should be breeding. Please keep dogs out of the pond to avoid disturbing them. I managed to get a photo of one but there were several pairs to be seen.



*Great crested newt*

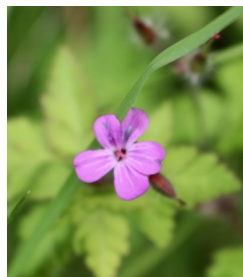
Around the pond the willow catkins were shedding white down which carries the seeds away and was caught in the grass and on a web in the rushes around the pond. On a warm day the air was full of the scent of the hawthorns and both bees and butterflies were busy.



*Forget-me-nots*

As you enter the woods a clump of forget-me-nots was in bloom. After the flower is pollinated nectar is no longer produced and the yellow centre of the flower fades to white as a signal to the bees. You can see in the photo here that the bottom right-hand flower is fading compared to the ones above it.

The cowslips are now setting seed but other flowers are coming out. Speedwell was out at the edge of the ride, partnered by Herb Robert with its distinctive smell, hence its common name of 'Stinky Bob'.



*Stinky Bob*

The meadow was covered in buttercups which caught the sun. Red clover and plantains were coming out. Amongst the grasses, common vetch was just coming into flower. At the top of the main ride the medlar was covered in bloom, promising a good harvest in the autumn.



*Common vetch*

The work to remove the old wire fence has finished, and the top of the meadow by the pond is recovering from the work and looking good.



If you are interested in joining the New Reeding Woods Group please contact our secretary Peny Conway on 07495 875299.

## Parish Council Reports

Please see page 2 for Parish Council contact details and website addresses.

### Hoxne

By the time you read this we will have appointed a new village caretaker by the name of Rick. He has taken over from Rob, who had to resign on health grounds. Rick will do his utmost to keep Hoxne clean and tidy. Hopefully you will make his job easier by putting any litter in the bins provided.

The Annual Village Meeting was held at the village hall some three weeks ago, at which village groups were invited to promote their work and/or tout for new members. It was a very hot day and that might explain why the event was not well attended. The Parish Council intends to review the parish meeting to see if it can be made more attractive in order to encourage more visitors and participation. All parishes are legally required to hold an annual parish meeting. The event attended by both our district councillor and county councillor is also an opportunity for members of the public to ask questions about their work in the parish. Your Parish Council also gives an annual report on its work during the year.

At the Annual Parish Meeting we were also given a talk by a member of the River Waveney Trust for Natural Flood Management. The talk has prompted the parish council to organise an open day, in conjunction with the River Waveney Trust at the village hall in the early autumn, at which advice on minimising the impact of flooding to households will be offered. This advice will be varied and hopefully help residents to either reduce serious flooding to their property or indeed to

that of their neighbours. The council is also planning to formulate an emergency flooding plan for future flooding events such as that experienced with Storm Babet.

We now have a new Community Traffic Engineer who has surveyed the roads around Hoxne with parish councillors from the traffic management group to assess what can be done to try and manage traffic through the village more effectively. We are now awaiting his report, with hopefully some idea of how much these improvements will cost the parish council.

It is with some regret that I have to report the resignation of our current Parish Clerk Sarah Foote, who has been undertaking this role for some sixteen years. Her contribution to the work of the Council has been immeasurable in keeping the councillors in order (!) and liaising with outside agencies on our behalf. We are now looking for a new Parish Clerk and there is an advert on page 8 of this edition of Village Voice giving a job description, if you are interested. There is also still a vacancy for another parish councillor. Further details for both posts can be found on the Parish Council website and on noticeboards distributed throughout the village.

**Chris Parkin**  
*Chair, Hoxne Parish Council*

### LESTER MAYES

#### Carpet & Upholstery Cleaning

- *Friendly, local service*
- *Carpet & fabric protectors applied*
- *Moth treatments available*

01728 660186  
07867 681571



- Door-to-door dial-a-ride service into local towns
- Weekly members' outings throughout the year
- Group hires for not-for-profit organisations

### *Outings for June:*

Mon 2nd - Wroxham Town - £18.00  
Mon 9th - Lunch at The Thatcher's Needle, Diss - £8.00  
Thurs 12th - Alder Carr Farm Shop & Crafts - £15.00  
Mon 16th - Lunch at The Black Horse, Thorndon - £8.00  
Thurs 19th - Attleborough Town (Market Day) - £15.00  
Mon 23rd - Cherry Lane Garden Centre, Pulham - £8.00  
Thurs 26th - Hillcrest Nurseries, Stanton - £10.00  
Mon 30th - Thetford Town / Garden Centre - £15.00

### *Outings for July:*

Mon 7th - Highway Garden and Leisure - £15.00  
Thurs 10th - The White Horse, Stoke Ash - £8.00  
Mon 14th - Peter Beales Roses, Attleborough - £15.00  
Mon 21st - Beccles - £18.00  
Thurs 24th - Mississippi Paddle Steamer & Lunch in Horning - £30.00  
(Includes bus fare and ticket for the boat. Lunch is extra)  
Mon 28th - Great Yarmouth - £20.00  
Thurs 31st - Breakfast at Wortham Tea Rooms followed by shopping at B&M and The Range, Bury St Edmunds - £18.00

## Suffolk Libraries – Mobile Library Routes

### **Denham & Wingfield** Calling every 4 weeks on **Thursdays**

Next stops: 7th June, 5th July

Wingfield, Vicarage Road layby (near Church Road): 10.50-11.05am

Denham post box: 11.25-11.35am

### **Syleham, Brome & Oakley** Calling every 4 weeks on **Tuesdays**

Next stops: 24th June, 22nd July

Syleham, Wingfield Road (Junction with Weybread Road): 11.45-11.55am

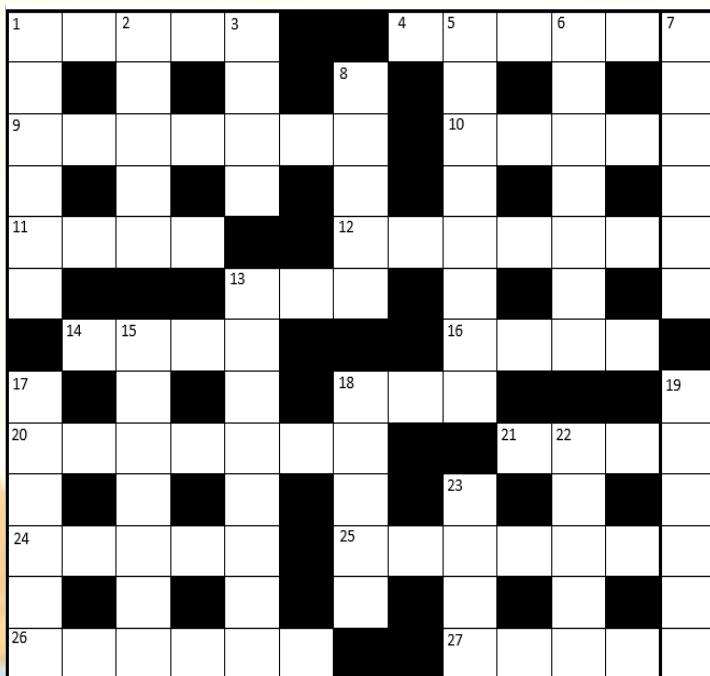
Brome & Oakley village hall: 12.15-12.30pm



## Crossword Puzzle No. 165

To enter the crossword competition, send\* your solution to the editor for a chance to win £20. The winner will be the first correct entry picked at random from those received by **Tuesday, 8th July** at the latest. Please add your name and address to entries.

\*You can email a photograph or scan of your entry to:  
[vvsuffolk@live.co.uk](mailto:vvsuffolk@live.co.uk)



### Across

1. Husband leaves Munich for a curry spice (5)
4. Location of a fish I hear (6)
9. Set free to rent again (7)
10. Partly promise retribution for skinflint (5)
11. Possess zero cardinal points (4)
12. Own up in church (7)
13. Espy bishop's diocese (3)
14. Modify one's diet (4)
16. Facts and figures initially from digital audio tape app (4)
18. Garden tool from Plymouth (3)
20. Move forward with a loan (7)
21. Neat volcano erupts (4)
24. Doug with a Dutch cheese (5)
25. Certify a correction (7)
26. Live in a dire side street (6)
27. About ten cross the threshold (5)

### Down

1. Vegetable used as an enticement (6)
2. Squashed lemon to produce a sweeter fruit (5)
3. Tidy form of 21 across (4)
5. Drink for meal done badly (8)
6. Examine mixed pectins (7)
7. Way out of a regressive situation (6)
8. Sounds like a bit of serenity (5)
13. Normal flag (8)
15. Drove us mad and eats hungrily (7)
17. Harass a nocturnal creature (6)
18. Centre of the art scene (5)
19. Arm gay Hungarian (6)
22. Energetic dance for Oliver (5)
23. Care about a plot of land (4)

**The winner of crossword puzzle no.164 was: S. Revell**

**Answers: Across:** 1. Counted 2. Doubt 8. Adult 9. Lapwing 10. Pretext 11. Sweet 12. Greedy 14. Stress 17. Malta 19. Unlucky 22. LECTERN 23. Cause 24. Remit 25. Red Lead

**Down:** 1. Cramp 2. Ukulele 3. Tithe 4. Delete 5. Deposit 6. Unite 7. Tagetes 12. Gambler 13. Dialect 15. Exclude 16. Turner 18. Locum 20. Lucid 21. Yield

# Waveney Tree Specialists Ltd

Your local tree surgeons, based in Hoxne, covering East Anglia.  
Established in 2008. Accredited, Fully Insured & Qualified.

We specialise in both domestic and commercial works and offer  
the following services:

Tree surgery and felling  
Tree & Hedge reshaping and pruning  
Disease and storm damage  
Stump removal

For a free no obligation estimate, contact us on

**01379 668636 or 07990 801388**

E: [info@waveneytrees.co.uk](mailto:info@waveneytrees.co.uk) W: [www.waveneytrees.com](http://www.waveneytrees.com)



Smas  
WORKSAFE

SSIP Approved  
Smas Worksafe accreditation



CONSTRUCTION SKILLS  
CERTIFICATION SCHEME



# Cowhams

***"For today's automotive demands"***



Scan or visit  
**[www.cowhams.co.uk](http://www.cowhams.co.uk)**

**01379 388 999**  
**[enquiries@cowhams.co.uk](mailto:enquiries@cowhams.co.uk)**

## ***EDITOR***

Lesley Balian

Blackberry Cottage, Cross Street, Hoxne IP21 5AH

Tel: 01379 669221

E-mail: [vvsuffolk@live.co.uk](mailto:vvsuffolk@live.co.uk) Website: [www.vvsuffolk.co.uk](http://www.vvsuffolk.co.uk)

## ***DEADLINES***

Issue	Copy Date
August / September	8th July
October / November	8th September
December / January	8th November
February / March	8th January
April / May	8th March
June / July	8th May

## ***ADVERTISING***

If you would like to place an advertisement,  
let us know and we will contact you

### **ADVERTISING CO-ORDINATOR**

Dawn Lodge, 5 Cross Street,  
Hoxne, Eye IP21 5AJ

Tel: 01379 668521 E-mail: [dlodge@talktalk.net](mailto:dlodge@talktalk.net)

## ***DISTRIBUTION***

Sally Dudley and teams of distributors in each village