

# *Village Voice*

DENHAM, HOXNE, SYLEHAM &  
WINGFIELD

FEBRUARY — MARCH 2023



Supported by community donation and advertising revenue

## PARISH COUNCILS

### DENHAM

Web: [www.denham.onesuffolk.net](http://www.denham.onesuffolk.net)  
Wendy Alcock (Clerk) 07726 924786  
Email: [denhamparishclerk@gmail.com](mailto:denhamparishclerk@gmail.com)  
Tania Farrow (C) 07758 739052  
Email: [tgfarrow@btinternet.com](mailto:tgfarrow@btinternet.com)  
Nick Farrow  
Kerina Jane  
Duncan McGregor

### HOXNE

Web: [www.hoxne.onesuffolk.net](http://www.hoxne.onesuffolk.net)  
Sarah Foote (Clerk) 07554 733621  
Email: [pc@hoxne.suffolk.gov.uk](mailto:pc@hoxne.suffolk.gov.uk)  
Katherine Farthing (C)  
Iain Gibson  
Alan Garnham  
Rob Marsh-Feiley  
Simon Wilby  
Chris Parkin  
Robert Farley

### SYLEHAM

Web: [www.syleham-pc.org.uk](http://www.syleham-pc.org.uk)  
David Young (Clerk) 01379 668556  
Malcolm Flounders (C) 01379 668413  
Gloria Elsdon (V-C) 01379 668409  
David Goodwin  
Gerald Lewis 01379 669258  
Steve Phillips 01379 668686  
Robert Pilch 01379 668038  
Steven Scott 07780 977518

### WINGFIELD

Web: [www.wingfield-pc.org.uk](http://www.wingfield-pc.org.uk)  
David Young (Clerk) 01379 668556  
Lee Smith (C) 01379 384531  
Tony Jolly (V-C) 01379 384024  
Charlotte Claxton  
Rosemary Elliott 01379 384789  
Robin Feavearyear 01379 586757  
Guy Mathias 01379 388391  
Dennis Murray 01379 384503

## CHURCH COUNCILS

### DENHAM

Helen Joslin (Sec.)  
Barbara Irwin (Treas.) 01379 669077  
Hilary Castleden (CW) 01379 668458  
Paul Chenery  
Margaret Reeves  
Michael Reeves

### HOXNE

Debbie Harding (Sec.) 01379 668190  
Guy McGregor (CW) 01379 668434  
Wilf White (CW) 07932 768900  
Caroline Abbott  
Andrew Castleden  
David Hyde  
Anne Swann

### SYLEHAM

Sarah Hawes (Sec.)  
Mary Lewis (CW/Treas.) 01379 669258  
Sarah Buckley (CW) 01379 668480  
Thelma Soanes  
Jim Woodger

### WINGFIELD

Patricia Grant (Treas.)  
Peter Demetriadi (CW) 07395 067380  
Jacky Taylor  
Robert Elliott

The Revd Canon Eleanor Goodison and  
Revd John McCracken are ex-officio  
members of each Parochial Church  
Council.

C Chair  
V-C Vice Chair  
CW Church Warden

# Contents

- Borderhoppa p28
- Christmas Quiz Winners p5
- Church News & Services p10-15
- Citizens Advice p37
- Crossword p42
- Diary Dates p4
- Eye Bach Choir p6
- Festival of Christmas Trees p25
- Fressingfield Shed p41
- Friends of Hoxne Church p14
- Gardener's Diary p21
- Harleston Choral Society p8
- Honey's Hair Salon p4
- Hoxne Bell Ringers p15
- Hoxne Garden & Social Club p21
- Hoxne Heritage Group p20
- Hoxne Phoenix Group p20
- Hoxne Village Hall p19
- Library Service p29
- Little Lambs p17
- Maynard Trust p17
- New Reeding Woods Group p26-27
- Next Stop Sympy p35
- Parish Council News p38-39
- Pat Blanchet p6
- Post Office & shop, Hoxne p39
- Scouts p31-33
- Syleham Wingfield Village Hall p19
  - Coronation preparations p5
- University of the 3rd Age p8
- Voices from the Past p40-41
- Waveney Heritage Centre p29
- Wartime Recipes p22-23
- What's On p6-9

Photograph: Graham Turner

Front cover: Hare, Waveney Valley

# Letters

## Syleham Carol Singing

A big thank you to all the singers and all those we sang to in Syleham on the evening of 21st September 2022. We had more singers than ever—24—and great fun was had. £500 was raised for the East Anglian Children's Hospice, and much mulled wine and sausage rolls were consumed! Brilliant!

See you all next year!

*Jane and Adrian Knott*

## SUPPORT FOR UKRAINE

Government website:

<https://donation.dec.org.uk/ukraine-humanitarian-appeal>

If you could share your home:

<https://www.gov.uk/register-interest-homes-ukraine>

## Scouting Equal Opportunities

I was pleased to read the letter in the December issue about our regular articles, if only to be reassured that someone reads it!

Our piece in this issue explains how we split our young people into age ranges from 4 to 18 years old and how the different sections are named. All sections are open to everyone, there is no gender split, boys and girls have the chance to do exactly the same programme and activities.

Scouting was started in 1907 and came to Fressingfield in 1908 and we have a long track record in providing young people with the opportunity to develop life skills, gather experience of the wider world and have fun. We believe that often those involved in recruitment will place a high value on experience in the Scout movement.

*Michael Knights  
Deputy Group Scout Leader,  
Fressingfield Scout Group*



*Fressingfield Scouts' Santa Run*



## Diary Dates

**Wed 1 Feb**

Honey's Hair Salon opens (below)

**Thur 2 Feb**

Hoxne Parish Council Mtg HVH p39

**Sat 4 Feb**

Windborne music HVH p9

**Tue 7 Feb**

Coffee & Cake 10am SWH

**Thur 9 Feb**

J's Meadow 10-12am Syleham

**Fri 10 Feb**

Film, *Mrs Harris Goes to Paris* HVH p9

Karaoke SWH

**Sat 11 Feb**

Coffee for the King SWH p5

**Tue 14 Feb**

Phoenix AGM & Scouts talk p20

**Wed 15 Feb**

U3A talk by David Webb, St John's Church, Harleston p8  
Wingfield Book Club, De La Pole p11

**Fri 17 Feb**

Quiz SWH

**Mon 20 Feb**

MU Fellowship Mtg, Time House p15

**Tue 21 Feb**

Hoxne Heritage AGM, The Swan, p20  
Scouts' Pancake Café p33

**Thur 23 Feb**

Coffee, Craft, Chat 1.30-3pm SWH

**Fri 24 Feb**

Quiz Supper WB p7  
Bingo SWH

**Sat 25 Feb**

SWSSC 40th anniversary SWH

**Thur 2 Mar**

Hoxne Parish Council Mtg HVH p39

**Fri 3 Mar**

MU World Day of Prayer, Hoxne Church p15

### HONEY'S HAIR SALON

**Unisex hairdressers**

**OPENS 1<sup>st</sup> FEBRUARY**

Cobblestones, Nuttery Vale,  
Hoxne IP21 5BB

Hi, my name is Sarah and I've been hairdressing for over 24 years.

I'm excited to announce my new adventure in opening the doors to my new salon, in a quiet location with ample parking.

**I will be offering clients a 10% discount on their first appointment**

Looking forward to welcoming you all soon!

Call 07508 339816

### Youth Worker Opportunity

The Churches of the Hoxne Benefice are seeking an experienced youth worker to help expand our current activities with children, young people and families.

You will work the equivalent of one day a week, including some evenings and weekends.

DBS clearance will be required.

For more details, contact  
Rev'd Canon Eleanor Goodison  
Tel: 07876 143579  
[eleanor.goodison@gmail.com](mailto:eleanor.goodison@gmail.com)





Sat 4 Mar

A Fressingfield Shed, The Goodwin Hall, Fressingfield p41

Tue 7 Mar

Coffee & Cake 10am SWH

Thur 9 Mar

Hoxne Annual Parish Mtg HVH p39  
J's Meadow 10-12am Syleham

Fri 10 Mar

Film, *The Lost King* HVH p19  
Karaoke SWH

Sat 11 Mar

Eye Bach Choir, Rossini p6

Sun 12 Mar

Robin Hood pantomime WB p7

Tue 14 Mar

Phoenix talk, Weybread garden p20

Wed 15 Mar

Wingfield Book Club, De La Pole p11  
Waveney Heritage talk,  
Supernatural Harleston p29

Fri 17 Mar

Quiz SWH

Mon 20 Mar

MU Fellowship Mtg, Time House p15

Thur 23 Mar

Lovesong, Diss Corn Hall p8  
Coffee, Craft, Chat 1.30-3pm SWH

Fri 24 Mar

Bingo SWH

Sat 25 Mar

Lovesong, WB p8  
Coronation Coffee p5 SWH

Sun 26 Mar

Hoxne Village Spring Clean p39

Tue 28 Mar

Denham Parish Council Mtg,  
St John's Church p38

Thur 30 Mar

Chris Wood's music WB p7  
Eastern Angles SWH

All Church Service dates p10-11  
Mobile Library dates p29

HVH St Edmunds Village Hall, Hoxne  
SWH Syleham & Wingfield Village Hall  
WB Wingfield Barns



## Syleham & Wingfield Coronation Celebrations

The month of May feels quite a way off—but we will soon be thinking of celebrating a Coronation!

A small group is making a start with organising an event for everyone in Syleham and Wingfield. Our local celebrations are likely to take place on Sunday 7<sup>th</sup> May, the day after Charles III's coronation. We have some ideas but are definitely open to suggestions...

We'll be holding two events where we can get together before the Coronation to give further suggestions for Wingfield and Syleham celebrations over a cup of tea or coffee - and perhaps raise funds to go towards our celebratory event. Come and join us at the village hall!

**Saturday 11<sup>th</sup> February**

Coffee for the King, 10-11.30am

**Saturday 25<sup>th</sup> March**

Coronation Coffee, 10-11.30am

Look out for leaflets delivered to each door within the two villages—these will have contact details. Please do get involved if you would like to—and come and join us on the day!

**Julie Thompson**

**Text 07929 794636**

**[juliethompson435@gmail.com](mailto:juliethompson435@gmail.com)**

## Village Voice Christmas Quiz

The lucky winners:

1st prize, £50: Nicki Barfield, Wingfield

2nd prize, £20: Elizabeth Downe, Hoxne

3rd prize, £10: Robert Goldspink,  
Wingfield

Answers:

Candy sticks on the  
gingerbread house, page 19

The word CHEESE was in  
*Voices from the Past*, page 44





Eye Bach Choir

Founded in 1974, Conductor: Leslie Olive

## Rossini's *Petite Messe Solonelle*

EYE TOWN HALL

Saturday 11<sup>th</sup> March, 7.30pm

With Rossini's original ensemble  
of four soloists, choir, piano and  
harmonium

Tickets £18  
from Wegottickets.com,  
The Handyman Eye, or  
[www.eyebachchoir.co.uk](http://www.eyebachchoir.co.uk)

## The Pat Blanchet Memorial Concert



Pat Blanchet and I had been performing together since 2011 as *Lost in Translation*, mostly as a duo all over East Anglia in pubs, village halls, local groups, festivals, care homes and concerts.

A Mendham girl originally, Pat returned to Norfolk in 2010 to live in South Lopham and we started playing together then. As I live in Syleham we have played several times in the Syleham/Wingfield/Weybread area.

We had a 21-month break for Covid and started again at the end of July 2021. We had only played about five gigs before she felt unwell, and was diagnosed with cancer. Unfortunately after a break in treatment for Covid, when it was restarted she became very ill and eventually spent her last three weeks in St Nicholas Hospice in Bury St Edmunds.

Whilst there I promised her we would hold a concert in her name, which we did on 12<sup>th</sup> November at Wingfield Barns. It was a sell-out. We had local singer/songwriter Terence Blacker, and major folk duo Winter Wilson playing, all of whom knew Pat. I played a couple of our songs that Pat wrote, plus a new one I had written about her.

We raised £1,600 on the night plus another £200 from other donations in aid of the East Anglian Air Ambulance, which was what she wanted.

**Roy Goodwin**

## David Huggins

### Handy Man

**Building and Garden  
maintenance  
including paths,  
patios & shed bases**

**07881 944877**

**01379 870323**

# Wingfield Barns

## Quiz Supper

Friday 24<sup>th</sup> February  
6.30pm for 7pm start

The popular quiz supper returns in February - spend an evening testing the grey cells, with a two-course supper served in the intermission. Small teams of four and prizes for the winning team.

## Chris Wood

Thursday 30<sup>th</sup> March  
7.30pm

Chris Wood is an uncompromising writer whose music reveals his love for the unofficial history of the English-speaking people. With gentle intelligence he weaves that tradition with his own contemporary parables.

His most recent album 'So Much to Defend' has received wide critical acclaim and includes reflections on minor

league football, empty nest syndrome, learning to swim, Cook-in Sauce and, not least, the Gecko as a metaphor for contemporary society.

Collaborators include Martin Carthy, Dizraeli, Billy Bragg, Andy Cutting, Andy Irvine, Karine Polwart, Jean Francois Vrod, The Imagined Village, Hugh Lupton, Martin Butler and many others.

On stage, Chris has the air of a craftsman who no longer needs to be precious about his art and he is a welcome return to Wingfield Barns.

Information and tickets at:  
[www.wingfieldbarns.com/events](http://www.wingfieldbarns.com/events)



PUZZLE HOUSE PANTOMIMES present the classic tale of

## ROBIN HOOD



Six performers portray a range of characters in a show full of songs, live keyboard music, thrills, spills and silliness!

Join our hero in Sherwood Forest as he dares to challenge the wicked, evil Sheriff of Nottingham. Some singing and cheering from the audience will help Robin on his way!

Meet Old Maid Marian, Alan A'Dale, Friar Tuck, Little John, Fey the Good Spirit of the Forest, the Witches of East Leake and King Richard. Steer clear of the Sheriff and his nasty sidekicks, Hangem and Flogem. Most of all... beware of The Phantom Spider!

**Sunday 12<sup>th</sup> March at Wingfield Barns**

3.00-4.50 pm in two acts. All tickets £7

Box office: telephone 01379 384656



## University of the 3rd Age

Harlestone & District u3a would like to invite you to join us for our monthly talk on **Wednesday 15 February**, at 2.00 pm in St John's Church, Harlestone.

Actor David Webb will be sharing the experiences of his life as a Yellowcoat in the highly successful BBC TV comedy series *Hi de Hi*, with insights into what happened behind the scenes.

Further information about this talk and everything that Harlestone & District u3a has to offer is on our website: [www.u3asites.org.uk/harlestone](http://www.u3asites.org.uk/harlestone) or by contacting **Kim Poulton** on 01986 788149.



## Harlestone Choral Society

Your friendly non-auditioning community choir is now rehearsing for our Summer Concert on 1 July, singing Haydn's *Stabat Mater* and Mozart Opera Choruses, Arias and Ensembles, with professional soloists Laura Morgan (Soprano), Joanna Gamble (Mezzo Soprano), David Menezes (Tenor) and Aleksi Koponen (Baritone). It's never too late to join us, and we're always looking forward to welcoming more singers, especially tenors!

Come and join us on a Monday evening 7.30 - 9.30 pm in The Church at London Road in Harlestone, under the direction of our Music Director Justin Bindley.

For further information about all our activities go to our website: [www.harlestonechoralsoc.org.uk](http://www.harlestonechoralsoc.org.uk) or contact our Chair Stella Brownsea at: [heidihouse@btinternet.com](mailto:heidihouse@btinternet.com)

## LOVESONG by Abi Morgan

*'That is the story of our beginning.  
And this is the story of...the end'*

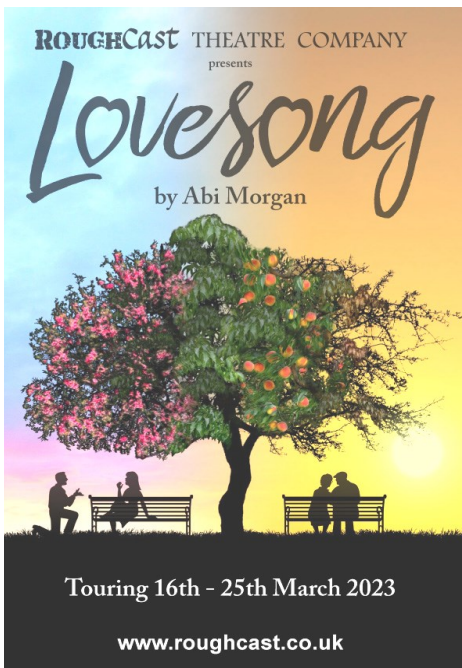
**Lovesong** is the story of one couple, told from two different points in their lives - as young lovers in their 20s and as worldly companions looking back on their relationship. Their past and present selves collide in this haunting and beautiful tale of togetherness. All relationships have their ups and downs; the optimism of youth becomes the wisdom of experience.

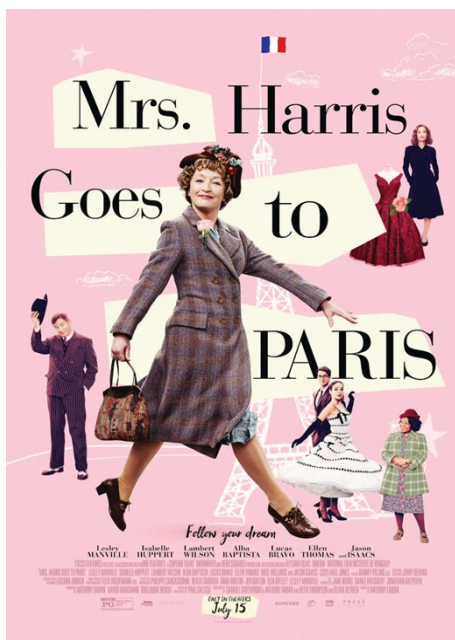
Written by critically acclaimed contemporary playwright Abi Morgan (*The Iron Lady*, *Suffragette*, *The Split*), this sometimes dreamlike, sometimes funny, sometimes heart-breaking one-act tale of a lifetime lived together does not shy away from some emotional topics.

Thursday, 23 March - Diss Corn Hall,  
Saturday, 25 March - Wingfield Barns

Tickets £12/£6 (students)  
All performances start 7.30pm

For further details visit [www.roughcast.co.uk](http://www.roughcast.co.uk) or tel 01379 586745





St Edmund's Hall, Hoxne  
Film Nights

## Mrs Harris Goes to Paris

Historical comedy drama. Adaptation of the 1958 novel Mrs 'Arris Goes to Paris. Set in 1950's London, Ada Harris (Lesley Manville) is a widowed house-help who falls madly in love with a couture Christian Dior dress, decides that she must have one of her own and travels to Paris.

Cert PG

Friday 10<sup>th</sup> February

7:30pm £4.00 a ticket

Advance Bookings 01379 668060

Tickets on the door subject to availability

Bar open from 7pm and during interval

## WINDBORNE — “The most exciting vocal group in a generation.”

Windborne's captivating show draws on the singers' deep roots in traditions of vocal harmony, while the uniqueness of their artistic approach brings old songs into the present. Known for the innovation of their arrangements, their harmonies are bold and anything but predictable.

This internationally famous singing group visited Hoxne in February 2019. They were a great success, were booked to visit

again but due to the pandemic had to be put on hold. We are pleased to announce they are at last returning to Hoxne Village Hall, on **Saturday 4th February**. For more information, visit [www.thevillagevoices.weebly.com](http://www.thevillagevoices.weebly.com)

**WINDBORNE**  
presents: *OF HARD TIMES & HARMONY*

Hailed as 'the most exciting vocal group in a generation.'

-SONGLINES-

Scan QR code for tickets!

Acclaimed folk acapella from the USA  
WindborneSingers.com • [f](https://www.facebook.com/WindborneSingers) [i](https://www.instagram.com/WindborneSingers) [y](https://www.youtube.com/WindborneSingers) [t](https://www.tiktok.com/WindborneSingers) WindborneSingers

Saturday 4 February  
Hoxne Village Hall - IP21 5AN

Workshop 2-6pm - £20  
Concert 7pm - £15  
Combined ticket: £30

[TicketSource.co.uk/village-voices-community-choir](http://TicketSource.co.uk/village-voices-community-choir)

# Church News

## Signs of life



It has been a tough winter in many ways, with a lot of bad news, the cost of energy requiring careful use of heating and some sad losses of friends from our village communities. But our mood inevitably lifts as we move out of winter into spring. The weather is (we hope) a little bit warmer, there are green shoots all around and even flowers and blossom starting to show. We look for signs of renewal in our community life as well. People are coming out of their winter torpor just as the birds and plants are doing.

The green shoots are a reminder that we need to take greater care of the natural world around us if spring as we have known it is to continue to gladden our hearts. We also need to look after each other to ensure that everyone can enjoy better days. In the church's year we are entering upon the season of Lent, forty days of fasting in preparation for Holy Week and Easter. But Lent is not just about mortifying the flesh. The prophet Isaiah tells us that God speaks like this about fasting:

Is not this the fast that I choose:  
to loose the bonds of injustice,  
to undo the thongs of the yoke,  
to let the oppressed go free...  
Is it not to share your bread with  
the hungry,  
and bring the homeless poor into  
your house?  
Then your light shall break forth  
like the dawn.

Whether you choose to buy an extra item at the supermarket for the food bank, to contribute to charities which help the poor and oppressed or to campaign for social justice, you can join in this kind of fast. And this is the Lent that will really prepare us for the new life that Christ brings us at Easter.

**Revd Canon Eleanor Goodison**

# Church Services

## Denham, Hoxne, Syleham & Wingfield

Planned church services in February/ March

(Note: Denham's monthly service has changed to the **third** Sunday of the month)

**Every Saturday and Sunday:**  
CW Morning Prayer at 8.00 am on [facebook.com/WingfieldChurch](https://facebook.com/WingfieldChurch)

**Every Friday:**  
Compline at 6.00 pm on Zoom

Some services in church are also live streamed or uploaded to [facebook.com/WingfieldChurch](https://facebook.com/WingfieldChurch)

### February

#### Sunday 5<sup>th</sup> February Third Sunday before Lent

9.30 am BCP Holy Communion, Hoxne  
11.00 am CW Holy Communion, Wingfield  
4.00 pm Messy Church, Syleham and Wingfield Village Hall



#### Sunday 12<sup>th</sup> February Second Sunday before Lent

9.30 am CW Holy Communion, Redlingfield  
9.30 am Café Church, Hoxne

#### Saturday 18<sup>th</sup> February

2.00 to 5.00 pm Quiet Afternoon in preparation for Lent, St Edmund Chapel, Hoxne

#### Sunday 19<sup>th</sup> February Next before Lent

9.30 am CW Holy Communion, Hoxne  
10.00 am Village Service, Syleham  
11.00 am CW Holy Communion, Denham  
6.00 pm Evensong on Zoom

#### Wednesday 22<sup>nd</sup> February Ash Wednesday

7.00 pm Holy Communion with Ashing, Wingfield





**Sunday 26<sup>th</sup> February**  
**First Sunday of Lent**

9.30 am BCP Holy Communion, Syleham  
9.30 am BCP Matins, Hoxne  
4.00 pm All Age service, Hoxne

**March**

**Sunday 5<sup>th</sup> March**  
**Second Sunday of Lent**

9.30 am BCP Holy Communion, Hoxne  
11.00 am CW Holy Communion,  
Wingfield  
4.00 pm Messy Church, Syleham and  
Wingfield Village Hall

**Sunday 12<sup>th</sup> March**  
**Third Sunday of Lent**

9.30 am CW Holy Communion,  
Redlingfield  
9.30 am Café Church, Hoxne

**Sunday 19<sup>th</sup> March**  
**Mothering Sunday**

9.30 am CW Holy Communion, Hoxne  
10.00 am Village Service, Syleham  
11.00 am CW Holy Communion, Denham  
6.00 pm Evensong on Zoom

**Sunday 26<sup>th</sup> March**  
**Fifth Sunday of Lent**

9.30 am BCP Holy Communion, Syleham  
9.30 am BCP Matins, Hoxne  
4.00 pm All Age service, Hoxne

*Revd Canon Eleanor Goodison*  
*Priest in Charge, Hoxne Benefice*  
**07876 143579**  
[eleanor.goodison@gmail.com](mailto:eleanor.goodison@gmail.com)

## *St Andrew, Wingfield*

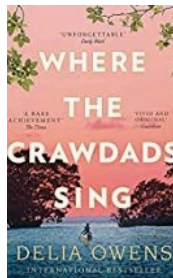
It was great to return this year to a full programme of Christmas events, including carol singing at Wingfield Barns' Christmas Fair, Carols by Candlelight on 18<sup>th</sup> December and a crib service on Christmas Eve, as well as our Christmas morning service. Special thanks to Peter Demetriadi for organizing the carol singing, to Jacky Taylor for organizing an



*Carol singing at Wingfield Barns—  
Peter Demetriadi, Jill Peters & Caroline Abbott*

outstanding church stall at the Fair and to Bob Elliott for decorating our welcoming Christmas angel.

Very sadly, we lost Melvyn Harsent from our village community just before Christmas. Mel had lived in Wingfield for nearly 34 years and was well known as a devoted Ipswich supporter and a sociable person who loved a party. His funeral took place on 19<sup>th</sup> January at the church. Our condolences go to Lesley, Meghan, James and Grace. We also received the sad news that Sheila Kent had died suddenly in Scotland. Sheila was very much missed when she moved away just over a year ago. She played a key role at Wingfield church as Treasurer during the major restoration work of the 1990s. We hope to hold a memorial service for her in the church in the spring.

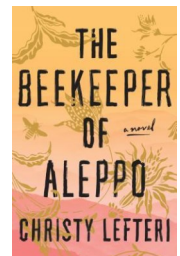


Our Book Club continues to meet monthly at 6.00 pm at the De La Pole Arms. We expect to

be discussing *Where the Crawdads Sing* by Delia Owens on Wednesday 15<sup>th</sup> February and *The Beekeeper of Aleppo* by Christy Lefteri on Wednesday 15<sup>th</sup> March.

For more details, contact Revd Canon Eleanor Goodison, 07876 143579.

*Revd Canon Eleanor Goodison*





Catholic Parish of  
The Most Holy Trinity  
Church of St Henry Morse  
Shelfanger Road, Diss IP12 4DX  
Parish Priest: Father Alex Anaman  
Tel: 01379 642914  
[parishpriest@holyltrinitydiss.plus.com](mailto:parishpriest@holyltrinitydiss.plus.com)

**Mass Times:**

**Saturday:** 10am and 6pm

**Sunday:** 10am

**Wed & Fri:** 9.30am

Confessions 10.45am Saturday  
The Rosary Group 9.30am Saturday  
Holy Days of Obligation usually 10am  
(please check newsletter)

*Info: Ellen Pitt Tel 01379 668308*

*Samantha Smith Beauty*  
*Mobile Beauty Service*

*Treatments Offered*

- Brow Wax £5*
- Brow Wax ~ Tint & Tidy £9.50*
- Brow Lamination (Inc Wax & Tint) £20*
- Lash Tint £7.50*
- Lash Lift & Tint £19.50*
- Gel Polish Manicure £16*
- Gel Polish Pedicure £16*
- B.A.B Manicure £18*
- B.A.B Gel Overlay Inc Gel Polish £27*
- B.A.B Gel Overlay Infills Inc Gel Polish £20*
- Luxury Gel Manicure £23*
- Luxury Gel Pedicure £23*
- Full Body Spray Tan £15*

☎ 07787011030

📘 Samantha Smith Beauty

📷 [samanthasmithbeauty](https://www.instagram.com/samanthasmithbeauty)

**releaf nutritional therapy**



Low energy? Weight gain? Headaches? Anxiety?  
Depression? Acne? Cravings? Hair loss?  
Irregular, skipped or painful periods?

Learn how you can improve your symptoms by  
changing your diet and lifestyle habits.

One-to-one consultations available online or in  
Thornham Magna, Eye.

[releafnutritionaltherapy.com](http://releafnutritionaltherapy.com)  
[caroline@releafnutritionaltherapy.com](mailto:caroline@releafnutritionaltherapy.com)  
07925 475 716



FRIENDLY PROFESSIONAL CARER  
OFFERS QUALITY CARE IN YOUR HOME  
PERSONAL CARE AND ASSOCIATED TASKS  
N.V.Q. TRAINED  
TRAINED IN DEMENTIA  
AND MANUAL HANDLING

REFERENCES AVAILABLE

CONTACT: ANDREA  
07872 530567

**Simply Beautiful by Anne**

*Weddings, Bridesmaids, Ball Gowns,  
Curtains, Cushions, Alterations  
and much more*

**Free Estimates Given**

*Magnolia House, Wilby Rd, Stradbroke*

**Tel: 01379 384097**

**Mob: 07944 894757**

# St Margaret, Syleham

## Church for the Community

First of all, a few quick thank yous arising from Christmas activities. Despite many unavoidable absences, the church was comfortably full for the annual treat of high-quality voices from Amici at our carol service and we were so grateful to Adrian Knott and friends for their loyal support. Roy Goodwin brought his guitar and gallantly performed a solo 'introit' as his music partner was sick.



A great big thank you to everyone who caught the spirit of our Christmas theme of angels, as messengers of good news. At the church, we had angels

in different forms made for the Christmas tree, for the pulpit and a prayer tree, plus an almost life-size angel welcoming visitors to the churchyard. Special thanks to those who decorated their houses with our theme: I was delighted to see angels in windows, angel wings over a front door, a lit garden angel and bright angels hanging from trees. Let us pray that the joyous message of Christmas cheered hearts at what has been a difficult time.

Some **Benefice Family activities** are in Syleham. Messy Church enjoyed a Christmas Party with Steff & Nonsense in

December and we held an angel-themed workshop for Club Create just before Christmas. Messy Church came to Syleham Church for Christingle on 8<sup>th</sup> January. Little Lambs for toddlers and carers continues in Hoxne.

**Pastorally**, we always wish to be available to those passing through dark times; we hope you will feel able to ask for help or for a visit.

**Church improvements** We finally have the go-ahead for our lighting project and hope to have the work done early in this new year. It will be very interesting to see what a difference it makes!

**Coffee & Cake** All are welcome at this sociable event, at the Village Hall 10am-11.30am on the first Tuesday every month. Plenty of lively conversation, free coffee/tea and cake await!

**Churchyard** We are still hoping for a volunteer to come forward to manage the conservation area.

**Organist!** Could there possibly be someone out there willing to play our church organ for a 9.30 service on the fourth Sunday of the month?

**Ukraine Crisis** We continue to hold the people of Ukraine, and indeed of Russia, very much in our prayers and there remains a special prayer in the porch for your use.

St Margaret's remains open daily and the church and environment provide a welcome place of tranquillity.

Contact for all above:

[mary.lewis43@icloud.com](mailto:mary.lewis43@icloud.com)  
01379 669258 / 07775 732259



**GOLDBROOK**  
BOARDING KENNELS & CATTERY  
Nuttery Vale, Hoxne, Suffolk IP21 5BB  
Telephone 01379 668267  
[info@gbkac.co.uk](mailto:info@gbkac.co.uk)



"Our Team"

**Proudly owned and run by**  
**Sara & Don Warren**

Please feel free to pop in and meet us,  
we will be happy to show you around

**OPENING TIMES**

Monday - Saturday 8.00am - 12 noon  
and 3.00pm - 6.00pm

Sunday and Bank Holidays  
9.00am - 12 noon



## St Peter & St Paul, Hoxne

It is usual at this time of the year to look back over the previous 12 months.

For the church the visit of the Bishop of St Edmundsbury & Ipswich, the Rt Revd Martin Seeley, on 27<sup>th</sup> November to dedicate the side chapel to St Edmund King & Martyr, was an important service. We remain very grateful for the gift of our beautiful new icon of St Edmund.

Our thanks to all who organised the Christmas Tree Festival. The trees provided a colourful back-drop to the Village Voices Winter Concert and to the Christmas services. Thanks also to all who participated in the Christmas Fayre at the Village Hall on 26 November. Just over a £1,000.00 was raised for church funds and an enjoyable time was had by all.

On finance, I am pleased to advise that Hoxne PCC has met, in full, all the obligations to the Diocese, by paying the Quota, the Priest's Expenses and the Mission Fund. The financial statements will be presented at the Annual Meeting and posted on the church notice board.

We are grateful to Nina Weaver for playing the church organ at many of our regular Sunday services. Our Christmas

Day service had the added benefit of participation of professional musicians. Caroline Abbott's daughter's Amanda sang the solo and her husband Robert Emery played the Church organ.

We look forward to the New Year with confidence, especially in regard to our church improvements. All the permissions required to build the new lavatory building have been secured. As a result, we expect work to start early in March, 2023.

It is also the intention to bring back the use of the Pre-Reformation Church Bells and to install a full set of ringing church bells.

We are committed to maximum use of the church and to continue with the enhancement of the building.

**Guy McGregor**  
**Hoxne Church Warden**  
**01379668434**

## Friends of Hoxne Church

As many of you will now be aware our long-time Chairman John Brawn was taken ill in December and sadly will no longer be able to continue in the role that he has so ably filled for many years.

In his recent Village Voice articles John had already indicated that falling membership and a shortage of committee members had made it increasingly difficult for The Friends to function as a fund-raising charity in support of the fabric of the church.

Since its inception in October 1986 this charity has raised in excess of £200,000 towards restoration work, improvements and repairs to the church and its grounds. Most



*Village Voices Choir, Christmas Concert 2022*

recently we have committed to make a significant contribution to the new toilet building, the pathways and general access.

It is now clear that the future of the Friends is in some considerable doubt and the remaining committee members will be giving serious consideration to all of the options that are open to us in the period leading up to the Annual General Meeting in April. Whatever the outcome we do intend to continue with the monthly coffee mornings and book sales, so please do come along and support us.

*David Hyde*  
Treasurer

### *Mothers' Union*

The Hoxne Mothers' Union Fellowship Group meets on the third Monday of the month at 2.30pm at Time House Low Street Hoxne.

Monday 20th February  
Fellowship Meeting

Monday 20th March  
Fellowship Meeting

There will a World Day of Prayer service at Hoxne Church on Friday 3rd March. Watch out for further details.

New members are always welcome at our Fellowship Group.

*Cathie McGregor*  
Group Leader  
01379 668434

### *St John, Denham*

Many thanks to Helen Joslin for organising a very jolly family Christmas quiz which was well-attended in spite of an important football match taking place in Qatar that day. It was necessary to have a knowledge of pantomime, Christmas cracker jokes, Christmas music of all kinds and the ability to guess the contents of your parcel by feeling through the wrapping paper - a childhood skill. It was great fun and very helpful in raising much-needed funds.

We are very grateful to Peter Creswell for coming to play for our carol service (on Tuesday evening before Christmas) ensuring it was a lively and festive

occasion. The church was full of holly and ivy and candles, probably much as it has been for many generations. The service concluded with mulled wine to counteract the unexpectedly seasonal frost and ice outside.

It was lovely to welcome so many of you on New Year's Day for the Benefice Service. It was an auspicious start to 2023 with a full church - and an organist to enhance the singing.

*Hilary Castleden*  
01379 668458

### *Hoxne Bell Ringers*

The Hoxne and Redgrave Ringers had a very successful Christmas supper at the Swan just before Christmas. There were 19 of us and the evening was enjoyed by all. Thanks to the Swan for having us.

Regular ringing has continued at Oakley and Redgrave with the learners making good progress and occasional ringing at Palgrave for eight bell practise. We were pleased to be able to ring for Oakley and Brome carol service at Brome church (five bells in a round tower needing restoration). Brome and Oakley hold their Christmas carol services in alternate churches.

There has been considerable activity around the bell restoration. The architect produced a measured survey of the tower and some proposals for the ringing gallery and work in the tower base. The Parochial Church Council (PCC) considered these and made some comments and suggestions. There was then a meeting in the church at which a way forward was agreed.

We plan to draw up the revised proposals and after agreement from the PCC submit them to the 5 conservation bodies that will have to be consulted. Their input will be considered before we present the proposals to the village and prepare a faculty application (church planning permission). Because the church is a grade 1 listed building there is no guarantee that anything proposed by us or our architect will be finally approved but we are hopeful that an affordable scheme can be agreed in due course.

*Andrew Castleden*  
01379 668458 / 07931 725928

# Nick Fulcher

Plasterer & Floor Screeder  
**FREE ESTIMATES**

Telephone 01379 642979



**Michael Bloomfield  
Electrical Services**



*Elecsa Reg. 22969 – Part P compliant*

All Domestic & Commercial work  
Fuse boards, Fault finding  
New wiring / re-wiring  
Testing & Inspection

Phone 07590 507307

01379 851964

# Andy Keeble Ltd. Oil Fired Boiler & Heating Maintenance

For oil boiler service,  
breakdowns and repairs.  
OFTEC registered and over  
30 years' experience.  
Reliable and friendly service.

Tel: 01379 668596

Mobile: 07801 515494

Rainford Cottage,  
11 Green Street, Hoxne



**SCOTT REGAN**  
CHIMNEY SWEEPING

Professional, clean & qualified service

- Industry standard certificate issued with every sweep
- Brush & HEPA filtered vacuum • Power sweeping
- Chimney cowl fitted • Tar removal from chimney
- Full public liability insurance

Tel: 01379 678881  
Mob: 07962 207846 / 07740 008456  
Email: [info@scottreganchimneysweeping.co.uk](mailto:info@scottreganchimneysweeping.co.uk)  
[www.scottreganchimneysweeping.co.uk](http://www.scottreganchimneysweeping.co.uk)



**SCOTT REGAN**  
WINDOW CLEANING

- All domestic & commercial windows cleaned
- Inside and outside cleans available • Builders first cleans • Solar panels cleaned • Fascias, soffits & gutters cleaned • Conservatory roofs cleaned
- Patio & driveway cleaning also undertaken
- Full public liability insurance

Tel: 01379 678881 Mob: 07962 207846 / 07740 008456  
Email: [info@scottreganwindowcleaning.co.uk](mailto:info@scottreganwindowcleaning.co.uk)  
[www.scottreganwindowcleaning.co.uk](http://www.scottreganwindowcleaning.co.uk)



**JD Tree Services**  
& COUNTRYSIDE MANAGEMENT

- Tree removal, felling or reduction
- Site clearance
- Stump grinding
- Waste removal
- Hedge cutting
- Chipping
- Firewood

Professionally trained, fully insured,  
friendly service  
Call today for a free no obligation quote

City &  
Guilds  
NPTC  
Qualified

Checkatrade

mobile: 07736 311782  
email: [info@jdtrees.co.uk](mailto:info@jdtrees.co.uk)  
web: [jdtrees.co.uk](http://jdtrees.co.uk)

## Little Lambs

Little Lambs had a very successful inaugural year and are looking forward to lots more activities and new members in 2023.

We will continue to meet at The Pavilion on the first Tuesday of each month (term time only) between 1.15 and 3.15pm. All under 5s with their accompanying adult/s are very welcome. In addition we hope to arrange more mornings at the Greengold Café and also a summer outing.

For the final meeting of 2022 the Little Lambs met in church when they had the opportunity to decorate their Christmas Tree for the Christmas Tree Festival. The pompom lambs and Play-Doh stars the children had previously made looked fantastic. Once they had decorated the tree, Revd. Eleanor then led a Crib Service when the children heard part of the Christmas story and placed the figures in the crib. We rounded off the afternoon with refreshments, which included plenty of cake and Christmas treats. It was fantastic to have 10 families represented, including a dad, which was wonderful.

*Caroline Abbott*



### **BABIES & TODDLERS GROUP**

**First Tuesday of each month  
Term time only**

**1.15 – 3.15 pm**

**The Pavilion, Hoxne  
Playing Field IP21 5AD**

**Babies and under 5s are welcome,  
but you must be accompanied by a  
responsible adult.**

**For further information e-mail  
cabbott364@gmail.com**

## *The Maynard Trust*

### **Support for educational needs**

The Trust is there to be used. Its funds are available to all who live in Hoxne, irrespective of age, who might have difficulty in meeting the cost of educational need.

**The deadline for receipt of  
applications to the Maynard Trust:**

**31<sup>st</sup> March 2023  
for the April Trust meeting**

Just write or email (preferably the applicant rather than a parent or guardian) to:

Amanda Jones (Administrator)  
Claret Cottage, Cross Street,  
Hoxne, IP21 5AJ

07758078754  
Email: [marmite1518@gmail.com](mailto:marmite1518@gmail.com)



## Computer Repair & IT Support

**Fast, Friendly and  
Understandable**

PCs, Laptops, Printers,  
Tablets, Virus Removal,  
Tune Ups & Upgrades,  
Broadband Problems,  
Networks etc.

**Home User or Small Business  
We Can Help You!**

**Hexpek.it**

**07908 222428 - 01379 668150**

[www.callthecomputerguy.co.uk](http://www.callthecomputerguy.co.uk)

## ACORN TREES

Professional advice & work

TREE SURGERY

Crown Reductions

Section Felling

Dead Wooding

Felling

Hedge Management

Garden Work

Landscaping

Fencing

## ADAM PICKESS

Merrist Wood College

City & Guilds Tree Surgery

Full public liability insurance

**FREE ESTIMATES**

**Telephone: 01379 588122**

**Mobile: 07776 235006**



### *The Swan Inn of Hoxne*

Experience a friendly warm  
atmosphere in our  
650 year-old inn.

Surrounded by old beams,  
real fires & witch marks above  
the fireplaces, you can be  
assured of a memorable visit.

Real home cooked food &  
ales available.

Lunch and evening menus  
available Monday to Saturday.

Sunday lunch is available from  
12 noon until 3pm.

See our facebook page for other  
activities and entertainment:

*"The Swan Inn of Hoxne"*

Tel: - 01379 668275

[www.theswaninnofohxne.co.uk](http://www.theswaninnofohxne.co.uk)

## Syleham & Wingfield Village Hall

### J's Meadow

Have you been to check on the progress of the bulbs that were planted on J's Meadow? Take the footpath opposite Syleham and Wingfield village hall IP21 4LT. The pedestrian gate at J's Meadow is always open, ready for you to take a look, take a walk and admire the amazing view of the Waveney Valley.



Many, many bulbs were planted in November—some of which were appropriately called Fireworks!

We are hoping to have news soon of some play and exercise equipment to be installed on J's Meadow.

Visit our website for all the latest news: [sylehamandwingfieldhall.org](http://sylehamandwingfieldhall.org)

**Julie Thompson**  
Text 07929 794636  
[juliethompson435@gmail.com](mailto:juliethompson435@gmail.com)

## Hoxne Village Hall

### Monthly Film Nights

We start 2023 Films on Friday 10<sup>th</sup> February with *Mrs Harris Goes to Paris* (see separate advert, p9).

10<sup>th</sup> March – *The Lost King*  
14<sup>th</sup> April – *See How They Run*

Bar open from 7pm, film starts 7.30pm with interval. Pre-book your tickets if possible on 01379 668060 as it helps us put out the right number of chairs.

We are still lending out (free of charge) DVDs of recent films shown at the Hall.

\*\*\*

The Hall car park was again the site for recycling real Christmas trees this year and we think approx. 30 trees were collected by Mid-Suffolk Council.

We were pleased to have the 1<sup>st</sup> Fressingfield Gang Show take place here for the first time in December. Audience was near capacity, and had a very amusing evening!



If you would like to discuss a celebration at the Hall, please contact the number/email address below. We are still working on getting our website up and running!

**Sharon Knights**  
Email [Sally/Sharon on hoxnevhbookings@outlook.com](mailto:Sally/Sharon on hoxnevhbookings@outlook.com)  
Phone Sharon 07876 215269

## Hoxne Heritage Group

The Heritage Group closed out a very busy and interesting year with two talks and a social event.



The Prunier Trophy

On 10<sup>th</sup> November historian Ivan Bunn returned to give us a presentation on the Lowestoft Fishing Industry and in particular the Prunier Trophy which was presented at the end of each season to the vessel having the largest catch.

At our regular monthly meeting in the Swan on 13<sup>th</sup> December, Richard Giffin standing in for Chris Parkin gave an interesting and enlightening mini talk on thatching as practiced by Graham Borrill. Using slides and material from Graham, Richard took us through the whole process, from the growing and harvesting of long straw right through to the finished roof.

Our annual Christmas Party has always been an event to look forward to and following two years of restrictions it was a pleasure to once again enjoy an evening of food and drink in good company. Pauline Rimmer who has done so much to sustain the good work of the Group very kindly hosted us at Gissing Farm and a great time was had by all. Looking forward to the new year—by the time you read this we shall have already held our first talk on January 12<sup>th</sup> by local historian Matt Champion on the subject of Kett's Rebellion.

Our Annual General Meeting will be held in the Swan on **February 21<sup>st</sup>** when it will be time to elect new officers and committee members, so if you would like to consider joining us please do come along.

**David Hyde**  
[www.hoxnehistory.org.uk](http://www.hoxnehistory.org.uk)  
**Margaret Sillis, Secretary**  
[margaret.sillis@btinternet.com](mailto:margaret.sillis@btinternet.com)

## Hoxne Phoenix Group

Our December meeting had to be cancelled due to the weather - a day and evening of freezing fog, especially in the surrounding villages to Hoxne. Jean Musgrave will now give her demonstration in November this year.

Nearly 40 members and friends joined together in early January for our New Year Lunch at the White Horse, Stoke Ash. Once again it was a very enjoyable meal and the company added to it.

"Becoming a House Detective" was the title of our January meeting talk by Stephen Poulter. He came to us in 2022 and this was a continuation talk about his move to a 17<sup>th</sup> Century cottage which needed renovation. After asking local people for information, the renovations revealed older brickwork underneath the plaster - it always helps to get as much information as possible if you are interested in the history of your house!

In February we have our AGM which will follow a talk from Fressingfield Scouts, who are planning a self-financed trip to Kenya. More information about this will appear in the next issue.

For our March meeting on Tuesday 14<sup>th</sup>, Melissa Sheldrake is visiting to give us a progress report on her Weybread garden. It was in a very poor state when she moved there, so had to start the garden from scratch.

Wendy Keable will be coming again to us on April 11<sup>th</sup> to talk about her next planned sailing trip. Several years ago she came and told us about her introduction to sailing. The night before their wedding, her husband-to-be told Wendy that for their honeymoon they would be going on a sailing trip - she had never been on one in her life! But she survived, and we will hear how things are going with a talk entitled "The Next Wave".

Visitors are always welcome to join our meetings, in Hoxne Village Hall at 7.30pm on the second Tuesday of each month. We just charge a Visitor's Fee of £3.00 to cover coffee/tea and biscuits.

**Pat Green, Secretary**  
**01379 668379**

## Hoxne Garden and Social Club

As I write this in January the snowdrops are out in bloom along with the aconites, and the daffodils will not be far behind.

Yet perversely enough I am not yet ready for spring, still enjoying the long winter nights in front of the fire, perhaps with a glass of wine, going out for walks in the blustery wind and driving rain, or just admiring the architectural forms of the bare trees and shrubs in the garden.

During the very cold weather during December the Club had a Christmas party, the first since the pandemic started. All members and their guests were invited to bring along some food to share with others and join in a quiz once festivities had started. Unfortunately I was ill and so unable to make the celebrations but I gather it was a huge success with the winning quiz team members each receiving a bottle of wine and the team members that came bottom all received a wooden spoon.

So now we look forward, with spring just around the corner. What has the Garden and Social Club to offer over the next two months?

In January we had a talk by Jenni Keer on the life of an author and her work.

In February we have a talk by Tony Sillis on Fungi, which I can assure you will be more interesting than it sounds.



*Fly agaric*

We then have our AGM in March when members will be invited to join the Club committee. New members are always welcome, or just come along to listen to our talks, mainly on horticulture but not always. The third Thursday in the month, 7.30 pm at the village hall.

**Chris Parkin**

## Gardener's Diary

### February

**Sow indoors:** chillies, leeks, sweet peas, tomatoes

**Sow outdoors:** broad beans, carrots, hardy peas

**Plant:** lily-of-the-valley, rhubarb, shallots, summer-flowering bulbs

**Prune:** buddleias (cut back hard), hardy fuchsias, late-flowering clematis, overgrown shrubs, roses, winter-flowering jasmine

### March

**Sow indoors:** basil, beetroot, celeriac, cucumbers, lettuces, tomatoes

**Sow outdoors:** broad beans, brussels sprouts, leeks, parsnips, peas, turnips, hardy annuals, sweet peas

**Plant:** asparagus, roses, strawberries, summer bulbs, trees, shrubs, climbers

**Prune:** damaged branches, dogwood, elderberry, lavender, mahonia

*Do you have any good April/ May gardening tips you could pass on to other Village Voice readers? If so, address details on the back cover. Thank you! (Ed.)*





- ◆ All household plumbing
- ◆ Oil and gas boiler install and servicing
- ◆ Air source heating installation
- ◆ Hot water cylinders

**Local, professional and reliable service**      Free non committal quotes

07749315908

[chrisjhoward5@googlemail.com](mailto:chrisjhoward5@googlemail.com)

[www.chrishowardplumbingandheating.co.uk](http://www.chrishowardplumbingandheating.co.uk)



## Hoxne's World War II Exhibition

### Wartime Recipes

from Marguerite Patton's  
'Cooking for Victory'

#### Imitation Sausage Rolls (makes 30)

4 oz cooked haricot beans  
2 oz cold cooked meat  
Fat from 1 bacon rasher  
1 lb shortcrust pastry  
Sage leaves, chopped  
Salt & pepper  
Milk

- \* Mince or finely chop together beans, cooked meat & bacon fat.
- \* Season with salt & pepper, mix everything together with the sage.
- \* Roll into 3 sausages, about 14 inches long. Roll pastry to match, and wrap around the sausage.
- \* Seal edges with a little milk.
- \* Bake in moderate oven (180°C) for 15-20 mins, then cut each long sausage into about ten pieces.

#### Cheese & Potato Pie

2 lb boiled potatoes  
4 tomatoes  
½ lb cheese, grated  
Salt & pepper

- \* Mash the potatoes with a little milk, salt & pepper.
- \* Put mixture into a greased pie dish.
- \* Put grated cheese and sliced tomato on top.
- \* Bake in fairly hot oven (400°F, mark 6 200°C) for 30 mins.

#### Savoury Potato Biscuits (makes 16 x 3-inch biscuits)

2 oz margarine  
3 oz plain flour  
3 oz cooked mashed potato  
6 tablespoons grated cheese  
1 teaspoon salt  
Pinch cayenne or black pepper

- \* Rub margarine into flour.
- \* Add potato, cheese & seasoning, work to stiff dough.

- \* Roll out thinly, cut into shapes & bake in moderate oven (180°C) for 20 mins.

#### Fruity Potato Cakes (makes 10-12)

4 oz boiled potatoes  
½ tsp baking powder  
1 oz sugar  
1 tablespoon of marmalade  
2 oz self-raising flour  
1 oz margarine  
1 oz dried fruit, plus:



A little extra sugar & mixed spice for topping

- \* Mash the potatoes (do not add milk) until light & floury.
- \* Sift flour & baking powder, mix with potatoes.
- \* Cream together margarine, sugar and marmalade.
- \* Add to potatoes with mixed fruit, mix it all together.
- \* Roll mixture out on a floured board with a rolling pin & cut into rounds or triangles.
- \* Grease a heavy frying pan and place on heat until a little flour in the pan turns golden brown within 1 minute.
- \* Put in the potato cakes and cook on each side for 2 minutes.
- \* Lower heat and cook gently for 5-6 minutes.
- \* Serve hot or cold. If wanted, sprinkle top with a little sugar & mixed spice.

### Uncooked Chocolate Cake

2 oz sugar  
2 oz cocoa powder  
2-3 oz margarine  
2 tablespoons golden syrup  
6 oz crisp breadcrumbs  
A few drops of vanilla essence

- \* Bake bread in low oven, cool and crush into breadcrumbs.
- \* Melt together margarine, sugar and syrup.
- \* Remove from heat & stir in cocoa, vanilla and breadcrumbs.
- \* Put in greased tin and refrigerate.



*I had a go at making the Uncooked Chocolate Cake (above) with added cherries and a spoonful of plain yoghurt on the side. I wouldn't really call it a cake, more like a biscuity flapjack, but tasty. (Ed.)*

### **K.G. READ & SON PLUMBING & HEATING CONTRACTOR**

- **BOILER INSTALLATION,  
SERVICE & REPAIR.**
- **OIL TANK REPLACEMENT.**
- **BATHROOM & SHOWERS  
INSTALLED INCLUDING  
CERAMIC TILING.**

**MARCUS READ  
01379 668328  
07710 757334  
ORCHARD HOUSE,  
HECKFIELD GREEN, HOXNE**





*Boxing Day Tug-of-War, Hoxne*







## Friends of St Peter and St Paul, Hoxne Festival of Christmas Trees

**A** big thank you to everyone who supported this season's annual display of Christmas Trees in the Church.

This year we were able to exceed all our previous efforts and display thirty-six trees of various types and sizes, all decorated and themed by local groups and individuals. As always, the feedback we have received has been most encouraging and it certainly helps us to raise awareness of the Church in the community.

Finally and most importantly, our sincere thanks go out to the display team of Ann Swann, Suzanne Lewis, Sue Horn and Cathie McGregor, without whom the whole event would not have been possible.

All donations will go to the Friends of St Peter and St Paul with St Edmund and to the Church itself.

*David Hyde*



*Santa Claus in Hoxne on Christmas Day*



## New Reeding Woods

### Woodland Management for Pound Lane Wood

With the winter solstice behind us and the days starting to lengthen the prospect of outdoor work becomes more appealing. The management of the woods has been a topic of discussion for the group over the last year.

Objectives for a wood should reflect its ultimate use. These might be single, such as softwood timber production or complete non-intervention for research; they can be several, including sporting, public and private leisure, firewood and fruit production, landscape improvement, research and record keeping, shade and shelter etc, etc. Some work well together, others may be mutually exclusive.

'Thinning' (removing a proportion of new trees in a woodland) is the most important operation for the woodland manager. It determines the form and character of the woodland for decades, until objectives are achieved. Thinning must be very carefully considered, as mistakes are difficult to rectify!

With most woodland tasks, doing nothing is *not* necessarily the worst option...at least in the short to medium term; trees develop slowly, so years of observing and considering options after planting will not be wasted. Wading in at the earliest opportunity to impose visions of what the wood "should be like" risks undoing the hard work of creating it, limiting future possibilities and benefits.

At Pound Lane Wood (PLW) for example, natural ash tree regeneration was at first so prolific and widespread it was tempting to promote it as the predominant species there at the expense of others. However, Chalara ash-dieback following shortly afterwards

decimated that sapling population and is an issue still. Thank goodness we waited!

Now, over 15 years since planting, trees are developing well, the mixture of transplants and natural regeneration presenting a vigorous and diverse tree community. Inside the woodland blocks, close spacing means competition for light is driving the most vigorous trees upwards, creating tall straight specimens. Greater access to sunshine on

the ride edges allows others there to develop more spreading canopies, with less need for vertical development.

Pound Lane Wood (PLW) has reached impenetrable 'thicket' or 'pole' stage in its development. It has grown a 'character' - semi-natural lowland, broadleaved and

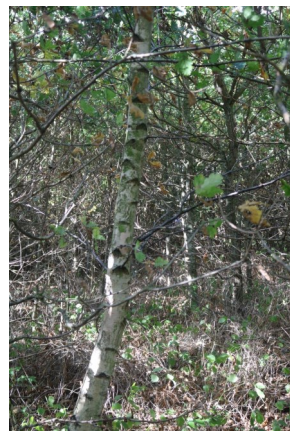
predominantly native species woodland, including some fruits and exotics. This is a period of significant biodiversity benefit...and for selecting objectives and the thinning regimes to achieve them.

Multiple objectives can be hard to achieve on a small site like PLW. Sticking to two or three is most practicable. Additionally, limiting factors including public access, availability of labour and equipment, must inform the process.

The New Reeding Woods Group is responsible for the future management of PLW and has been considering its objectives for some time. Encouraging public access and participation while improving and



Autumn colour



Dense thicket in the woods

maintaining biodiversity value are the prime ones. There are very obvious potential points of conflict with these, so the biodiversity objective will be the 'senior partner' when questions of priority arise - temporary public exclusion from the pond and surroundings during Great Crested Newt breeding season, for instance.



*Trees spreading at the edge of the woods*

PLW also includes areas of short grass and meadow which, with the pond, create the widest range of habitat the group could establish on such a modest area (1ha). As the wooded blocks develop, effects on these are anticipated, principally from shade and canopy overhang. These will be dealt with case by case but the pond/meadow/orchard areas will take precedence over the trees, as these represent more threatened environments in the wider countryside. Close-mown grass less so.

So to the thinning process; this is really a way of managing light and space to the growing trees by removing others.

One option is the formal approach, removing all competing vegetation from the better specimens so they can grow on and leaving trees in straight lines for easy mechanical/pedestrian access. This system creates a rather 'orchard-like' manicured appearance, requiring significant inputs of time and effort to maintain - at the expense of biodiversity value.

Given the pre-eminence of the biodiversity objective, the management group is allowing a more naturalistic woodland to develop - following nature as the trees develop and grow. Access within the woodland blocks is not essential for PLW users, as there are adequate paths and spaces to negotiate the space.

Leaving the trees mostly inaccessible is

beneficial to wildlife, especially nesting birds. Disturbance will be further minimised by maintaining the thorny, dense, woodland block perimeters. These offer valuable 'edge' habitat and, since most species are flowering/berrying shrubs, of greatest value for foraging and commuting wildlife.

Thinning will be targeted at individual trees, particularly where larger growing species such as oak are competing with others and shading out surrounding vegetation. PLW will ultimately hold few forest-sized trees, perhaps a dozen or so. This will allow the more environmentally valuable 'scrub' tree species to continue offering shelter and habitat, extending their effectiveness for the future.

So the woods will remain largely untouched, with our work focused on removing the fence by the pond that needs repair. We hope that future visitors will understand our strategy for managing the woods and continue to enjoy the wildlife there. We also have a Facebook site where we share photos and information about the woods.

If you are interested in joining us and getting hands-on experience of helping improve our local environment and enjoying outdoor activities, please contact our secretary **Peny Conway** on **07495 875299**.

## **B.C. GODDARD**

INTERIOR / EXTERIOR  
PAINTER, DECORATOR  
PROPERTY MAINTENANCE

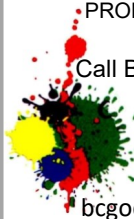
Call Brian for a free quote on

**01379 388174**

or mobile

**07759 956627**

[bcgoddarduk@outlook.com](mailto:bcgoddarduk@outlook.com)



**SELF CATERING HOLIDAY ACCOMMODATION**  
"CANALSIDE", SAWMILLS, DERBYSHIRE  
BUNGALOW – SLEEPS 4



**HELEN & PETER GILBEE**  
01379 740339

**WEBSITE: [HOLIDAYCOTTAGES.CO.UK](http://HOLIDAYCOTTAGES.CO.UK)**  
**PROPERTY NUMBER: PK934**

## **HANDYMAN SERVICES EYE**

All manner of repairs  
improvements & general building  
works undertaken large & small.

Friendly reliable honest work.

**Please call Mark**

**07818 088080**

**01379 871399**



**Happy New Year to all of our  
members and supporters!**

The Borderhoppa 2023 outings leaflet is now available. We have many trips arranged throughout the year including pub lunches, garden centres, the coast, mystery tours, boat trips and many more.

You can pick up a leaflet at your local library, information centre, GP surgery, from one of our drivers or by calling the office.

Need help with transport? Borderhoppa buses are available to people of all ages who are unable to use ordinary bus services either because of mobility difficulties or because there isn't a bus service available for them to use.

Our door-to-door dial a ride service can take you shopping, to medical appointments (excluding hospitals), to visit a friend or relative or attend a local club.

If you would like to find out more about the great service we provide, please call us on 01379 854800 or visit our website [www.borderhoppa.org](http://www.borderhoppa.org)



# **TREE MENDERS**

**Environmental Arboriculture**

TREE SURGERY.  
HEDGE CUTTING/LAYING.  
FIREWOOD.



TREE PLANTING.  
TREE FELLING.  
STUMP GRINDING.



Free Quotes and advice.

Established 2004. Fully qualified and Insured.

[treamenders@yahoo.com](mailto:treamenders@yahoo.com)  
[www.treamendersnorfolk.co.uk](http://www.treamendersnorfolk.co.uk)

**01379 853070 07905 750070**

## Waveney Heritage Centre

*The Old School, Grove Road, Brockdish, IP21 4JP*

The Heritage Centre, based in the old school building in Brockdish, provides communities in the Waveney Valley with talks, craft fairs, our own radio museum, clubs and venue hire, as well as housing and displaying local historical archives that have been donated or loaned.

### Mah Jong

We are introducing a Mah Jong group to start in March. A Chinese game similar to gin rummy but played with tiles, it is fun and addictive!

Taught and played in an informal setting, we welcome anyone that would like to give it a go but we also welcome players that have played before. A very social game, we will start with a taster session. Keep a look-out on our website for further details.



If you are interested, please contact Janet (07713858054) or email [waveneyheritagecio@gmail.com](mailto:waveneyheritagecio@gmail.com).

### Future Events:

#### Wednesday, 15 March at 7.15 pm

Supernatural Harleston – a talk by Stephen Poulter

#### Saturday 8<sup>th</sup> and Sunday 9<sup>th</sup> April 10.30 - 2.30 pm (Easter weekend)

Grand Opening of a New Exhibition by the Waveney Heritage Centre Archive and Waveney Museum Trail

More events will be added; please check website.

To book, phone Jill Edwards on 01379 669057 or Mary Thompson on 01379 668279 or just turn up.

## Suffolk Libraries – Mobile Library Routes

### Hoxne and Denham

 Calling every 4 weeks on **Thursdays**

Next stops: **9 February and 9 March**

Hoxne, The Swan car park from 10:35 to 10:50

Hoxne, St Edmunds House from 11:00 to 11:15

Denham, Post Office from 11:25 to 11:35

### Syleham and Wingfield

 Calling every 4 weeks on **Fridays**

Next stops: **17 February and 17 March**

Syleham, Wingfield Road (Junction with Weybread Road) from 11:40 to 11:55

Wingfield, Post box from 12:00 to 12:20



## ADE SELLARS - GARDENER

RHS QUALIFIED - RELIABLE - REASONABLE RATES

Garden Maintenance, Hedge Trimming, Mowing  
Patio Cleaning, Planting, Pruning, Turfing  
Weeding, Vegetable Garden Creation

Call today for a friendly chat about how  
I can help make your garden bloom

Email: [adriansellars@hotmail.com](mailto:adriansellars@hotmail.com)  
Mobile: 07957 588545



## Safe & Sound Hygiene and Pest Control

For ALL your Domestic  
and Commercial Pest Control  
No obligation – Free Survey / Quotes

Call us to discuss your pests

**01379 788865**

[safeandsoundhygieneandpestcontrol.co.uk](http://safeandsoundhygieneandpestcontrol.co.uk)



## DISS SELF STORAGE

07757 689988

[www.DissSelfStorage.co.uk](http://www.DissSelfStorage.co.uk)



For all your  
Commercial &  
Personal  
Storage Needs

Also Click &  
Collect Boxes  
& Packaging



## R GRITTON

Professional Decorators  
High quality, reliable service

For all your interior and  
exterior requirements

Telephone: 01379 586768  
Mobile: 07766 982600

## Septic Tank Services

- Septic tanks emptied • Sewage treatment plants emptied, serviced and installed
- Drain jetting • Soak away replacement and installation •

~ Fully licenced & insured ~

Lenny Jolly  
07905 794221

[lenny.sts@hotmail.co.uk](mailto:lenny.sts@hotmail.co.uk)

## J R Automotive Repairs

Servicing  
Diagnostics

Air-conditioning

Unit 4  
Corner Green Farm  
Wingfield Green  
Wingfield  
IP21 5RE

Brakes

Exhausts

Tyres

Wheel Alignment

Phone:

MOTs

07769 968160  
01379 388378

[www.jrautomotiverepairs.co.uk](http://www.jrautomotiverepairs.co.uk)  
Email: [enquiries@jrautomotiverepairs.co.uk](mailto:enquiries@jrautomotiverepairs.co.uk)

## Fressingfield Scouts

The Scout Group came together on 13<sup>th</sup> November to take part in **Remembrance Sunday**. Wreaths were laid at Fressingfield, Hoxne and Laxfield with around 90 uniformed members attending four different events. Sixty-eight paraded in Fressingfield, including our Squirrel Drey. Young people read in church, undertook the offertory and were all-round amazing. Thank you to all our members for showing discipline, dignity and respect.

### Activities

As the evenings are now dark most of our activities have been inside, though Pioneer Troop had a Patrol Leader Team training day where they learned about and practiced navigation and map reading, firewood preparation, fire lighting, building camp ovens from 25 litre drums, preparation of ingredients and camp cooking, use of a compass and problem-solving. The day finished with a very dark campfire with a foil cookery tea and toasted marshmallows and s'mores.

### Fundraising

We have had a few fundraising events with Pioneer Troop and Tigers Cubs having a cake stall at Weybread Church Christmas Fair. The Explorers ran a very successful Fun Bingo evening to raise funds for their Kenya Expedition next Easter. Tigers Cubs (and their parents!) have also been incredibly busy making then selling Christmas craft items at markets in Laxfield and Fressingfield as well as the Gang Show. Because of the cold weather and icy conditions there were fewer participants at our second Santa Fun Run, however everyone had a good time and we raised a reasonable contribution to our funds from entry fees, refreshments and a couple of generous donations. Thank you to everybody that supported us at these events.

### Gang Show

The Sections' main focus since October has been working on their contributions for our biennial Gang Show, which was in Hoxne Village Hall.

The evening went very well with a close to capacity audience. All Sections contributed and most members either performed on stage, helped behind the scenes or ran craft and refreshment stalls.



*Remembrance Sunday parade*

### Other activities

have seen Pioneer Troop returning to the Martial Arts theme with an evening of fencing and decorated the Scout Group's Christmas Tree for the Hoxne Church Christmas Tree Festival. Wolf Cubs had a cooking session making peppermint creams, Warrior Beavers made paper wreaths for Remembrance Sunday and have made some decorations to sell at the Gang Show. Tigers Cubs had a spooky night hike near Halloween, Squirrels spent a very productive evening painting pictures of Bonfire Night scenes and both Cub Packs combined for an evening Tubing in Norwich.

Many new members have been invested into the younger sections as the Scout Group continues to grow. Most Sections either finished the year with a party of some sort, or cancelled their last meeting and deferred their end of term activity to next year because of the cold weather and poor road conditions.

In most sections, the Leader teams (usually after getting some ideas from the young people) are working on next term's programme. They will try to include some badge work with teamwork and skills development.



*Tigers Cubs make biscuits to sell from their market stalls*

*Cont.*

# Traditional Oak Carpentry

Carpentry Repairs

New Oak Homes  
and Extensions

Garden Structures

Condition Reports

3D Design Service

01449 768817

[www.traditionaloakcarpentry.co.uk](http://www.traditionaloakcarpentry.co.uk)

GRAHAM BORRILL



## THATCHER

COSY COT HECKFIELD GREEN  
HOXNE EYE SUFFOLK IP21 5AB

TEL : 01379 668 777 MOBILE : 07960 254 537

Email : [grahamborrill@yahoo.com](mailto:grahamborrill@yahoo.com)

## HOXNE SERVICE STATION

Servicing and Mechanical  
Repairs

MOT preparation

Welding repairs

Tel: 01379 668654

## J. FELTON

CHIMNEY SWEEP

- CLEAN & FRIENDLY SERVICE
- FULLY INSURED
- SMOKE TESTS
- INSURANCE CERTIFICATES
- CCTV INSPECTIONS
- COMPETITIVE RATES

PLEASE CALL 01986 799175

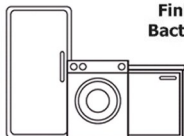
ICS

REGISTERED MEMBER OF THE INSTITUTE OF CHIMNEY SWEEPS

Doug Aiken part of

## DK Appliances Ltd

Domestic Appliance Repairs,  
Sales of New and Reconditioned Machines



Finbows Yard, Station Road,  
Bacton, Stowmarket IP14 4NH

Telephone:  
01449 780398



*"In these unprecedented times,  
we were able to rely on Rosedale  
with complete confidence. You  
stood by us and were a tower of  
strength."*

– from a family we have cared for at Rosedale



**Rosedale**  
FUNERAL HOME

Diss 01379 640810 (24 hrs)  
Harleston 01379 853999 (24 hrs)

[www.rosedalefuneralhome.co.uk](http://www.rosedalefuneralhome.co.uk)

We are a family  
business and  
promise to  
provide exceptional  
care and a truly  
personal 24 hour  
service, when you  
need it most.

**Following some feedback from Village Voice readers we thought it would be good to explain about our age range and Section names.**

Our youngest Section is Squirrel Drey, who are aged four and five. From age six, young people move up to Beavers where we have two Beaver Colonies called Ninjas and Warriors. We have two Cub Packs which we have called Tigers and Wolves. Cubs are aged eight to ten and a half The next step is to Scouts where we have two Troops called Adventurers and Pioneers. The final age group for young people is Explorers, from fourteen until they leave at eighteen. Some of the Explorers help at other Sections and are Young Leaders. We hope that a proportion of the Explorers will remain in Scouting as Leaders or join the 18 to 25 Section which is much less formal called Network, run by the members on a District basis.

Each Section is independent with a separate Leader Team, programme, set of traditions and way of doing things, though often both Sections for an age group will work together for activities. The basic structure, uniform and badge requirements are set by The Scout Association.

Squirrels, Beavers, Cubs, Scouts, Explorers and Network are Scout Association titles for the age groups but the Section names are specific to Fressingfield Group. They were chosen by the Section Members when the Sections were split because of large numbers. All sections are open to everyone, there is no gender split, boys and girls have the opportunity to do exactly the same programme and activities.

## Pancake Café

On **Shrove Tuesday 21 February** from 7.15 to 8.30 Pioneer Scout Troop are running a Pop Up Pancake Café at the HQ. If you need more pancakes, or if you

fancy a look around the building and to see our young people in action, please come along. Tigers Cub Pack will be running some sideshows during the evening to keep everyone amused.

## eBay sellers support the Scouts

And finally, a request from our Executive Committee.



*Navigation exercise with the Hoxne Man in Brakey Wood*

Are you much of an eBay? Do you use the online marketplace to get rid of stuff you no longer want or need, and to pick up second-hand bargains, or maybe as an alternative place to buy new bits and pieces? When you sell on eBay you can 'sell for a cause' and opt to donate a proportion of your sale price to charity, including to the 1st Fressingfield Scout Group.

Items that benefit charity may sell faster, even at a premium price. Donate 10% or

more and your item will feature an attention-grabbing charity ribbon—it may even be listed in the Charity Shop. Plus, you reduce your eBay seller fees and enjoy tax savings.

So just one more easy way that you can help the 1st Fressingfield Scout Group to support and develop young people - from 4-year-old Squirrels, through Beavers, Cubs, Scouts and Explorers - to help them learn, grow and give back to the community.

For more information on selling for charity on eBay visit <https://tinyurl.com/sellforcharity>

To go to the 1st Fressingfield Scout Group page on eBay visit <https://tinyurl.com/eBayFressingfieldScouts>

To find out more about 1<sup>st</sup> Fressingfield Scout Group have a look at our website: <http://www.1stfressingfieldscouts.org.uk> or speak to any Leader.



## ED'S PLAICE

### *Traditional Fish and Chips*

- Wednesdays: serving from 3 - 7pm  
PULHAM MARKET, The Green
- Thursdays: serving from 4 - 7pm  
HOXNE, The Playing Field Pavilion
- Fridays: serving from 4 - 7pm  
WORTHAM, Common

**Tel: 01379 741967**  
**Mob: 07904 231006**

Soil Association Member AG25612



**Anglian Organics**  
**Organic Fruit & Veg**

Delivery to your village every Wednesday

Mobile **07748 156953**

Email for produce list

[anglian.organics@outlook.com](mailto:anglian.organics@outlook.com)

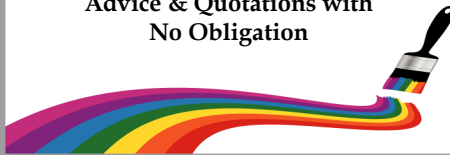
## Ron Rankin Painting & Decorating

For all your  
Domestic & Commercial  
Property Maintenance & Decorating  
Competitive Prices &  
Professional Standards  
Reliable & Experienced

**Telephone: 01379 388243**

**Mobile: 07762 326 226**

Please call for  
Advice & Quotations with  
No Obligation



## UNDER ONE ROOF

### THE COMPLETE HARD LANDSCAPING SERVICE

DRIVEWAYS, NATURAL  
STONE PATIOS, DECORATIVE  
WALLING, WATER FEATURES,  
ENTRANCE GATES & FENCING.

PRESSURE WASHING CLEANING  
OF PATIO AND DRIVEWAYS

FULLY INSURED FAMILY  
BUSINESS WITH  
OVER 20 YEARS EXPERIENCE

FOR A FREE NO PRESSURE  
QUOTATION PLEASE CALL  
MARK ON 01379 677027 OR  
07768 636618

## G.G. EVANS

### Pest Control Services

**07795 177695**

**01379 608932**

**info@ggevens.co.uk**

**MOLES, RABBITS,  
WASPS & MORE**



## NEXT STOP SYMI

Final Update: 1<sup>st</sup> Jan 2023



It is with a mixture of pride and sadness that the trustees of Next Stop Symi have decided to close down the charity from Spring 2023.

This decision has not been taken lightly but the reality is that the need for the charity in its specific role of helping improve the daily lives of refugees arriving on Symi is now no longer there. At the height of the crisis there were over 550 refugees sleeping rough around the harbour front. But now there are less than 30 on the island during the summer months.

Obviously we look back on the past six years with an immense amount of pride for what Next Stop Symi has achieved - from criss-crossing the UK to collect donated items, to the grand expeditions in our faithful NSS van down across Europe and out to the Greek islands to deliver the clothing and blankets, toys and medical supplies to the frontline helpers on Symi and Samos.

Then there were the fundraising events, culminating in the wonderful Greek Food & Music night at our local village hall in Hoxne. And the educational activities, encouraging book collections and letter-writing between pupils at our local schools and the refugee children out in Symi.

And of course we also take a lot of pride in the relationships and partnerships that the charity was able to establish since it was set up in June 2016 - networking with faith communities and organisations across the UK - then finding the right partners on the ground in Symi and Samos to make sure everything we transported out to the Islands was put to good use improving the quality of life of those people helplessly trapped in mid-flight from the conflict zones in their home countries.

So as we wind up operations, we have decided to donate part of our last remaining funds to help the people of Symi itself who have displayed immense empathy and humanity in dealing with the influx of refugees over the last six years. The money will be split between healthcare and education on the island - specifically contributing towards the purchase of a much-needed portable ECG machine for the main town, and helping support local schools.

But whilst Symi seems well on the road to recovery, our decision to close is also tinged with sadness - because we know that the refugee crisis around the world is still very much an ongoing challenge and still needs a lot of work before it is solved.

So that is why we have decided to take the balance of those remaining funds and donate it to the Association of Ukrainian Women in Britain. Again, we feel confident that because we have a personal contact with the organisation, the money will be put directly to work to make a difference to the everyday lives of those suffering through a hard and cold winter in Ukraine.

So once again we would like to thank everyone who helped support Next Stop Symi and hope that we have in the last six years made some small contribution to alleviating the terrible hardships that refugees experienced crossing the Aegean.

### *The Trustees of NEXT STOP SYMI*



# The Daily Care Agency



High Banks, Athelington Road, Horham, Eye, Suffolk, IP21 5EH

Tel: **01379 388438** - Mobile: **07977 075301**

E-mail: [office@thedailycareagency.co.uk](mailto:office@thedailycareagency.co.uk)

***ARE YOU LOOKING FOR SOME EXTRA CARE AND SUPPORT TO HELP YOU REMAIN INDEPENDENT WITHIN YOUR OWN HOME AND COMMUNITY?***

THE DAILY CARE AGENCY IS A SMALL PRIVATELY OWNED DOMICILLIARY AGENCY THAT TAKES PRIDE IN HAVING THE TIME TO CARE AND OFFER INDIVIDUAL SUPPORT TO OUR CLIENTS

For further information, please contact **01379 388438 / 07977 075301**

***ARE YOU A CARER? – WE REGULARLY RECRUIT FOR LOCAL CARERS TO JOIN OUR TEAM***

The Daily Care Agency is registered and therefore licensed to provide services by the Care Quality Commission. Provider ID 1-101723169



# Cowhams

***“For today's automotive demands”***



Scan or visit

[www.cowhams.co.uk](http://www.cowhams.co.uk)

**01379 388 999**

[enquiries@cowhams.co.uk](mailto:enquiries@cowhams.co.uk)



**Mid Suffolk**

**December was an expensive month, with presents to buy and heating bills going up, and now I'm really struggling financially. I've seen offers for 'Buy Now Pay Later' when I'm doing online shopping. It seems like a good way to spread the cost of some of the things I need, but how can I make sure I don't get into debt?**

With everything getting more expensive, it's sensible to be thinking about how you can manage. There are lots of things you can do to try and stay in control of your money.

Before you start spending, work out exactly what money you have coming in and going out each month. Be realistic about what you need for essentials like food and travel. Take a look at the budgeting tool on the Citizens Advice website [citizensadvice.org.uk/debt-and-money/budgeting](https://citizensadvice.org.uk/debt-and-money/budgeting). This can help you set a budget you can stick to.

You'll also be able to find tips on how to reduce your regular living costs, which might be helpful if you're struggling to keep within your budget. While it can be tempting to split payments with schemes like Buy Now Pay Later (BNPL), you'll need a plan to pay the money back. If you're using something like that repeatedly, you might be managing for now, but it could also be a sign that it's unaffordable in the long run. Keep a record of how much you owe in total.

Always make sure you understand what you're signing up for, how you'll make the repayments and what will happen if you can't pay on time. It's important to check the returns process for both the retailer and credit provider. Paying through BNPL may also affect the cost of postage returns if you've ordered online. The riskiest thing about it is that you're not guaranteed to be protected if something goes wrong. For example, you can't go to the Financial Ombudsman Service if you have a complaint.

If you find yourself turning to credit cards, your overdraft, or store cards for your spending, keep track of what you owe. You should prioritise paying your rent or mortgage, plus energy bills and Council Tax first, because not paying these has the most serious consequences. On the Citizens Advice website, you can find information on what bills to prioritise and how to manage debts. There's also information on the support available for paying these and other bills.

If, like many during this crisis, you find you can't afford to reduce your debts after paying your priority bills and essentials, seek advice as soon as possible. If you need specific support or don't feel able to manage your situation alone, contact Citizens Advice Mid Suffolk so they can help you find a way forward.

Everyone's circumstances are different, particularly when it comes to managing personal finances, so it's important to get support that's correct for you.

Citizens Advice Mid Suffolk can provide advice on this and other issues, including debt, employment, benefits and family law. You can contact them on **01449 676060** or use the contact form at [midsuffolkcab.org.uk/contact-us](https://midsuffolkcab.org.uk/contact-us). More information and our opening hours can also be found at [midsuffolkcab.org.uk/contact-us](https://midsuffolkcab.org.uk/contact-us).



## Parish Council Reports

Please see page 2 for Parish Council contact details and website addresses.

### Denham

#### Quiet Lanes in Denham

After completing the consultation process to designate Denham Low Road (from Shingle Hill Corner up to Hoxne Primary School) and Church Road, Denham, as Quiet Lanes, the signs were finally installed in December. The signs highlight the fact that these lanes are frequently used by walkers, cyclists and horse riders, to create a safer environment for non-vehicular road users. The Parish Council has also requested that signs are fitted along Hoxne Road to highlight the regular use of this road by horse riders.

We continue to work with Suffolk Highways to look at measures to improve the safety of the roads in our Parish and to maintain the standard of the roads and verges.

Our next Parish Council meeting is on **Tuesday 28<sup>th</sup> March** at 7:30pm in St John the Baptist Church, Denham. All are welcome. The agenda will be published on our website at <http://denham.onesuffolk.net/parish-council/>

### Hoxne

#### Report from January meeting

The council considered the budget for the forthcoming financial year commencing 1 April 2023, and it was agreed to meet the increasing demands on the parish council and rises in statutory

## Wills, Discretionary Trusts, Protective Property Trusts & Lasting Powers Of Attorney **FAMILY FIRST WILLS**



Specialist Estate Planning advice explained in plain English in the comfort of your own home or via Zoom. Local advisors across Norfolk and Suffolk.

**BASIC WILLS £99**

**Unregistered LPAS £99**

**TRUSTS from £99**



**01379 430027**

Call us today to arrange your  
Free, no obligation consultation

Free friendly advice. Reasonable rates  
[www.familyfirstwills.co.uk](http://www.familyfirstwills.co.uk)  
[info@familyfirstwills.co.uk](mailto:info@familyfirstwills.co.uk)

costs, the precept request for this year would be increased from £14,000 (which was a 12% decrease on the previous financial year) to £14,700. This decision was made after consideration of a detailed budget for the forthcoming year, the council's statutory obligations, the level of reserves currently held. This 5% increase equates to approximately £1.17 per year for those living in a Band D property. Decreased last year by 12%.

### Annual Parish Meeting

This annual assembly of the village will take place on **Thursday 9<sup>th</sup> March 2023** in St Edmund's Hall. Before the meeting starts at 7.30 pm, there will be an opportunity from 6.30 pm to visit tables from a range of village organisations and clubs and find out more about all that our village has to offer. If you represent an organisation or club in the village and would like to book an exhibition table, please contact the Parish Council to make a reservation. It is essential that a table reservation is made ahead of the event.

At the event the Parish Council will be offering information on the role of Councillor and how individuals can stand for election to the Parish Council in May 2023. There will also be the opportunity for you to share any concerns you have about traffic and speeding in the village and make suggestions for items of expenditure from the parish council's community infrastructure levy fund.

### Village Spring Clean

This annual event is scheduled for **Sunday 26<sup>th</sup> March** with willing volunteers requested to congregate at the St Edmund's Hall car park from 10.00 am.

### Parish Council Meeting Dates:

**Thursday 2 February, 7.30pm**  
**Thursday 2 March, 7.30pm**  
Both meetings at St Edmund's Hall.

---

## HOXNE POST OFFICE & SHOP



A working group has been formed to safeguard the services and amenities that Hoxne Post Office and Shop affords the community with all options being explored.

It is anticipated that in the near future a legal entity will be formed and at that stage we will be seeking to raise funds from both the local community (by way of share subscription) and other funding bodies (by way of grants) to purchase the business.

We will also be surveying village residents and users of the Post Office about what they want from the Post Office and shop in the future as well as asking residents whether they are prepared to purchase shares in such a venture.

To make sure you have your say and stay up-to-date, please email:

[hoxnevolunteer@gmail.com](mailto:hoxnevolunteer@gmail.com)

to be added to the email newsletter list.

*Mike (Barton)*

# Voices from the past

December 1989 to March 1990

(Part 1)

According to The Voice, despite widespread flu, life in the villages ticked away according to the usual rhythm of fundraising and festive events during late 1989. The Hoxne Players staged a review, carol services were held in the churches and a group of local people from the church held a carol service at the Depperhaugh for staff and residents. There was a Christmas fair raising £486.77 and Santa appeared as usual for his Christmas morning dawn deliveries.



The children at Hoxne School were creeping into the computer age - it was reported that 'the new computer and printer are being well used and children have created their own poems, stories and school

newsletter, which were typed and printed out in different writing styles, providing a new dimension in our computer studies'. They were also planning to boost school funds by selling tea-towels depicting various village landmarks. Mr S Govier 'who drew and designed the layout' was thanked. I wonder if any of these have survived?

The appeal fund for a new pavilion at the playing field had nearly hit £6000, applications had been made for grants and their architect was submitting detailed plans to the Council.

The Eye Centre of the Red Cross was busy raising funds at various events including, I noticed, a Pippadee party where clothing was sold at home parties similar to those of Tupperware. I had forgotten that these ever existed but according to Google they were popular

during the 70s and through the 80s. I can find no mention of what happened to the organisation but I notice that Pippadee clothing is now being sold online as 'vintage'!

Further afield primarily in Western Europe there was widespread turmoil and change as countries in the former USSR were finding their places in the free world. These revolutions apparently started in Poland with the Polish workers' mass strike movement in 1988. A shipyard electrician by the name of Lech Wałęsa (subsequently President of the Republic of Poland) became the leader of the Solidarity trade union, which on 4<sup>th</sup> June won an overwhelming victory in a partial free election, leading to the peaceful fall of communism in that country.



A special Morning Prayer service was held in Syleham's St Margaret's Church on September 3<sup>rd</sup> to greet the Bishop of St Edmundsbury who was cycling round the boundaries of his diocese. There had been reports of the recent dramatic events in Poland and many spoke of their happy recollections of Polish forces stationed in East Anglia during the war years and wanted to wish the Polish people well in the future. It was decided that the collection on this occasion would be for the people of Poland as they embarked on their new democratic regime. £110 was sent via the embassy with every good wish for their future.

Elsewhere, I was intrigued to find a letter entitled MAROC Lel 15/1/90 PRISON CENTRAL, KENITRA from Idrissi Kaitouni Ali. It was addressed to the Ball family of Abbey Farm and had been the response to a greetings card sent following a service they had attended in Pershore Abbey with the theme Prisoners of Conscience. The priest had arranged for addressed cards to be on sale and the Ball family had bought and sent one.

Having no recollection of human rights abuses in Morocco I searched for Idrissi

Kaitouni Ali online and discovered that he had been a poet and painter and was arrested in March 1982, while still a student, for publishing *Etincelle*, a collection of poems on social injustice and political oppression. He was indicted for, among other charges, ‘insulting the King’s [Hassan II] dignity’. He was reported in Middle East Research and Information Project (MERIP) Human Rights Briefing 163 (March/April 1990) as being illegally held incommunicado for over a month and reportedly subjected to electric shock torture and currently serving out a 15-year sentence. He served ten years mainly in Kentira prison. A founding member of the Moroccan section of Amnesty International, he died in 2017 of natural causes at the age of 58.



The translation from French of his reply, printed in Village Voice Feb/Mar 1990, was rather long and quite ‘flowery’ but I should like to share a small part of it:

“Dear friends, John, Caroline, Emma and Dan,

Your prayers, even if they didn’t bring me anything tangible (like freedom for me and my people) surely bring comfort in my very real predicament. At least I know that I am not forgotten.

What do I need, you ask me? Oh, everything, dear friends! Life foremost; love next, far away from me, since it is eight years already that my fiancée waits patiently for my return. If I am allowed a dream, it will be to dream of returning one day to her, the best girl in the world, the most beautiful and the most patient.”

*Dawn Lodge*

## A Fressingfield Shed?

Are you interested in being involved with starting a Shed in Fressingfield, available to surrounding villages?

Come along on **March 4<sup>th</sup>** to find out how it can happen!

Many villages and towns have created these all over the country including locally - Beccles, Halesworth, Debenham and recently in Harleston.

There is no typical ‘Shed’. Although originally started as Men’s Sheds, many now include women in their activities. They evolve as the interests and needs of the community become apparent. Initially they can provide a place to meet, a workspace to use and access to tools and equipment—often woodworking but sometimes including computing, gardening, re-purposing or electronics.



Craft activities are also popular. These can provide a service to the community in what is produced or repaired, as well as the ability to conduct hobbies.

As well as the practical outcomes from Shed activities, the friendship and companionship that it can provide is often valuable help with loneliness and mental health. Using your own skills and experience and sharing it with others is a wonderful thing to do, as well as expanding these with people with other skills.



We are holding an initial meeting on Saturday March 4<sup>th</sup> at The Goodwin Hall in Fressingfield (formerly used by the Scout Group) at 10.30am to assess interest. We will be serving tea and cakes and have a brief talk from a leading member of an established Shed.

Please come if you have any interest that might benefit from this idea, or just if you might like to attend.

We will need to form a small group to take this forward if we have enough people interested.

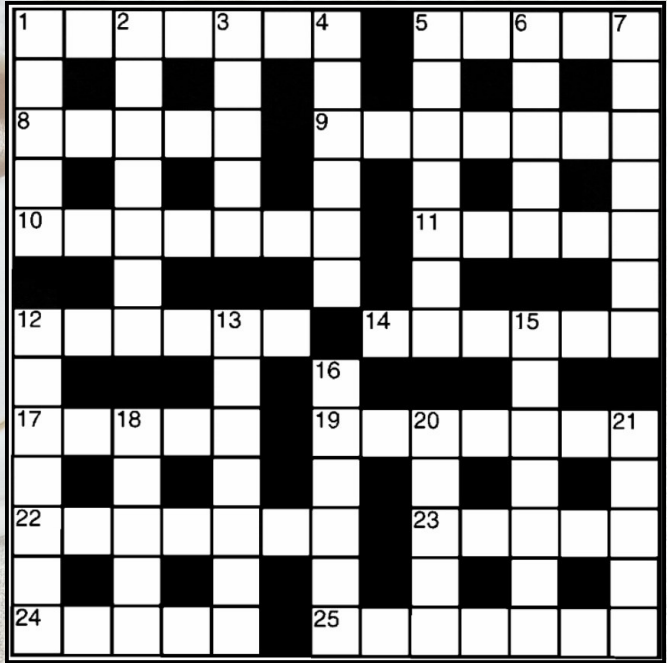
*Roy Goodwin*  
 roygoodwin53@gmail.com  
 007768 847175



## Crossword Puzzle No. 151

To enter the crossword competition, send\* your solution to the editor for a chance to win £20. The winner will be the first correct entry picked at random from those received by **Wednesday 8th March** at the latest.

\*Don't forget you can email a photograph or scan of your entry too.



### Across

- 1 Practices of border force officials (7)
- 5 Almost marinade a Liverpudlian (5)
- 8 Barrister's instruction were succinct (5)
- 9 Topical flow of energy (7)
- 10 Sprain I treat with a painkiller (7)
- 11 Golf club to keep door open (5)
- 12 Our Ref in an uproar (6)
- 14 Sounds like a young bird could validate a signature (6)
- 17 Transform louse into a bird (5)
- 19 Augment a chirp to another bird sound (7)
- 22 Golf pros personally thrive at times (7)
- 23 High up in an attic (5)
- 24 Dig into part of a model vehicle (5)
- 25 Persons adapt to support charity (7)

### Down

- 1 Emergency cabinet committee to discuss a snake (5)
- 2 Ship's master taking exercise (7)
- 3 Express willingness to behead a strongbox (5)
- 4 Runner up working in a corner (6)
- 5 Made a swan cry for becoming skinny (7)
- 6 Capsize some in a group endlessly (2-3)
- 7 Earnestly request part of a centre attraction (7)
- 12 Shoe insert for a highwayman (7)
- 13 A lepers turn for the worse (7)
- 15 Anxious over sun changes (7)
- 16 Son of Greek god famously fell to earth (6)
- 18 Revers loops on a winding reel (5)
- 20 Possessed a garden tool in U.S. state I hear (5)
- 21 Adjust taper for father (5)

The winner of crossword puzzle no. 150 was: **Hattie Foote**

Answers - **Across** 7) Asthma 8) Tickle 10) Bonanza 11) Tulip 12) Grit 13) Score 17) Tease 18) Gene 22) Leech 23) Exclude 24) Biceps 25) Corset

**Down** 1) Cabbage 2) Stencil 3) Amend 4) Disturb 5) Skull 6) Reaps 9) Lancaster 14) Perhaps 15) Request 16) Detente 19) Alibi 20) Teach 21) Actor

## Hoxne Post Office and Shop

Low Street, Hoxne IP21 5AR  
Tel: 01379 668334

**Shop** Opening hours:

**Monday to Saturday 09:00 to 17:30**

**Sunday 09:00 to 11:00**

(We are closed on Bank Holidays)

We are a local village Post Office and shop. We stock bread, cakes, dairy and grocery items and frozen ready meals

### **Post Office**

Counter hours remain the same for now:

Monday, Tuesday	09:00 to 13:00 and 14:00 to 17:30
Wednesday	09:00 to 13:00
Thursday, Friday	09:00 to 13:00 and 14:00 to 17:30
Saturday	09:00 to 12:30
Sunday, Bank Holidays	Closed



## Waveney Tree Specialists

Your local tree surgeons, based in Hoxne.

We are fully qualified, certificated, and insured.

### **We specialise in**

Tree surgery and felling  
Reshaping and pruning  
Disease and storm damage  
Stump removal

For free estimates call

**01379 668636 or 07990 801388**

E: [info@waveneytrees.co.uk](mailto:info@waveneytrees.co.uk) W: [www.waveneytrees.com](http://www.waveneytrees.com)



## ***EDITOR***

Lesley Balian

Blackberry Cottage, Cross Street, Hoxne IP21 5AH

Tel: 01379 669221

E-mail: [vsuffolk@live.co.uk](mailto:vsuffolk@live.co.uk) Website: [vsuffolk.co.uk](http://vsuffolk.co.uk)

*Joan at Hoxne Post Office & Shop has kindly agreed to accept copy and crossword entries on our behalf.*

## ***DEADLINES***

<b>Issue</b>	<b>Copy Date</b>
April / May	8th March
June / July	8th May
August / September	8th July
October / November	8th September
December / January	8th November
February / March	8th January

## ***ADVERTISING***

If you would like to place an advertisement,  
let us know and we will contact you.

### **ADVERTISING CO-ORDINATOR**

Dawn Lodge, 5 Cross Street,  
Hoxne, Eye IP21 5AJ

Tel: 01379 668521

E-mail: [dlodge@talktalk.net](mailto:dlodge@talktalk.net)

## ***DISTRIBUTION***

Sally Dudley and teams of distributors in each village